

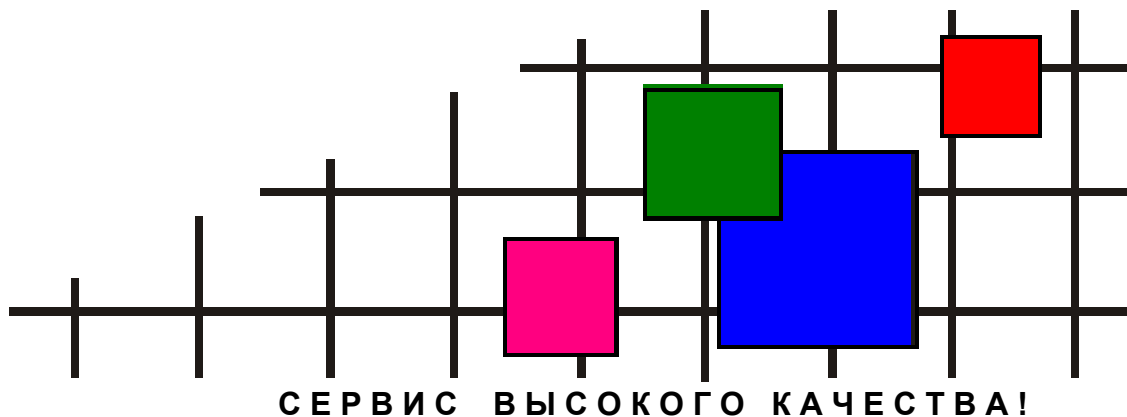
ковровая плитка • ковровые покрытия • ковры и ковровые дорожки • гобеленовые настенные ковры
безопасный пол • грязезащита • аксессуары для лестниц и пола • системы светодиодной подсветки
низкопрофильная система кабельной проводки • сопутствующие товары

СОВРЕМЕННЫЕ НАПОЛЬНЫЕ ПОКРЫТИЯ (ООО «СНП»)

Телефон +7 (495) 916-94-83

E-mail info@s-n-p.ru

Сайт <http://www.s-n-p.ru>



Redefining space for Government

*Interface*FLOR



Redefining space for government

InterfaceFLOR is a worldwide leader in the design and production of high-quality, innovative modular floor coverings. Our products and services are becoming the first choice for end-users in government – providing a flexible and sustainable flooring solution for the government sector.

We understand some of the challenges and issues that influence procurement across the government sector. That's why we have a range of stylish and inspiring products for every space.

Carpet tiles can be mixed and matched to create focal points or the illusion of a seamless floor. Offering you cost effective flooring solutions.

We are accredited with the following government procurement frameworks.

We are part of SAVE (Strategic Alliance for Value and Efficiency), a fully managed scheme, which provides us with access to the iESE (Improvement and Efficiency South East) Framework. This means that being part of an integrated supply chain we are able pass on cost savings and efficiency benefits onto you.

Government Procurement Service

We have a framework agreement with the Government Procurement Service (formerly Buying Solutions) for the supply and delivery of floor coverings. Government Procurement Service, an executive agency of the Cabinet Office, delivers procurement savings for Central Government, Health and organisations across the UK public sector. This means you won't need to go to tender to buy from us, as we have already been through a rigorous OJEU (Official Journal of the European Union) selection process and can sell to you at pre-negotiated prices.

CAESER

We are on the CAESER (Corporate Assessment of Environmental, Social and Economic Responsibility) programme. A portal widely used by public sector procurement specialists to gain supplier assurance. This means we can support you through the procurement process meeting many government sustainability targets, such as waste & recycling and carbon reduction.





Our products

What makes the difference?

InterfaceFLOR offers the largest carpet tile range globally in the market. All our products are created to reflect our core values: design, innovation and sustainability.

We offer unlimited design flexibility to update interiors or to create a bespoke space.

9.8million m²

of random design products sold in emea since launch in 2001.

Design Innovation

In 2001 InterfaceFLOR, introduced the first random-design carpet tile taking inspiration from nature's floor, by studying the science of Biomimicry. The non-directional pattern can reduce waste to as low as 1% or 2%, depending on the size and shape of the room. It is faster to install and individual tiles can be easily replaced without the constraints of batch compatibility.

Today, many ranges are available for you to create your own random flooring space: Transformation, Entropy II, Straightforward, Fastforward, Reprise Collection, Consolidation and Concrete Mix.

Technological Innovation

In 2000, InterfaceFLOR introduced a unique carpet-construction process to the market. Microtuft, challenged the old perception that high yarn weight equals high quality. It proved that a well-constructed dense surface can be just as durable and hard-wearing.

The highest environmental impact of a carpet tile is in the yarn. Our Microtuft products use up to 50% less yarn compared to a typical carpet tile.

Microtuft products also deliver our great benefits: easy-to clean surfaces, comfort versus hard floor, improved acoustics and sophisticated aesthetics.

Bespoke designs

We believe in giving customers freedom of choice and that's why, in addition to our extensive portfolio of products. We offer custom products across our service centres in the UK and Germany. As well as offering a bespoke service from field designers based across Europe.

We offer customers:

- Personal design service
- Tailored solutions
- Rapid turnaround
- Endless possibilities

Improve your working environment

On average, over a person's lifetime 12.9% is spent in the office (World Statistics Day 2010). This has a significant impact upon the importance of a good working environment. At InterfaceFLOR, we're committed to improving your working environment. Here's how.

The versatile textures, designs and colours make it easy to create inspiring and comfortable surroundings that contribute to the wellbeing and productivity of employees.

Easily interchangeable, carpet tiles make it possible to re-style a room and keep it fresh with a minimum of waste and cost.

Modular carpet provides comfort underfoot and falls are much less likely on a carpeted surface.

Emissions of volatile organic compounds (VOCs) can affect the indoor air quality of buildings. Carpet generally has significantly lower VOC emissions than other building materials such as paints, adhesives or laminate flooring. All our products are tested according to the most stringent criteria well below the limits set by various national environmental regulators.

Our glue-free installation system, TacTiles™, eliminates the biggest contributor to VOC emissions from a carpet installation, the glue. The system minimises noise and odours with traditional adhesive and enables installation during work hours with less disruption.

TacTiles™

TacTiles™ provides a more sustainable, flexible and cleaner way to fit flooring.



Heuga 731 & Palette 2000



Softening sound

At InterfaceFLOR, we understand the need for quiet spaces to work and meet.

Acoustics are an important consideration when designing any space.

Excessive noise can be distracting and make it hard to concentrate, and even normal speech levels can echo throughout a large room.

A good acoustic environment is always the result of many factors, but to effectively absorb sound within a room and control noise from footsteps and other impacts, carpet is considered to be one of the best alternatives.

For installations where an increased level of comfort and sound absorption is required, our ReCushion Bac is available for most of our carpet tiles. This special backing creates an added sense of luxury and further reduces the effects of echo and noise.

Globescan

A consistent top three ranking in Globescan's survey of sustainability experts

We make it easy

At InterfaceFLOR, we understand the importance of carrying out routine maintenance to ensure your carpet remains looking as good as the day it was installed. The implementation of a routine carpet maintenance programme preserves, maintains and extends the life of any carpet investment, making restorative cleaning unnecessary.

Why is maintenance important?

A carpet that is poorly maintained can adversely affect an interior's image, reduce product performance and accelerate the need for replacement.

Different areas within any interior are subject to a variety of uses, such as foot traffic.

InterfaceFLOR Maintenance programme

Maintaining a carpet's appearance means more than choosing the correct cleaning method. Selecting the right products from the start contributes greatly to the overall performance of the floor covering. We will work with you to choose the best floor covering and maintenance plan for your interior needs.

Two quick steps:

1. We assess the building layout, traffic patterns and hours of operation
2. We then consider each area and what needs to be included in the plan:
 - Suitable barrier matting to prevent soil from reaching the carpet. Suitable products for high traffic areas
 - An effective cleaning programme
 - Floor care solutions & products
 - Maintenance equipment

1 - 2% waste

Our random design products bring installation waste down to as low as 1 -2%

12,500 of carpet

In 2010 we diverted 12,500 tonnes of carpet and carpet scraps from landfill through our ReEntry® programme





We're on a mission

Sustainability remains a topical issue in the government sector, with many government end users searching for the most environmentally responsible products and services to demonstrate that they are working towards a genuine solution. In the mid nineties, InterfaceFLOR was one of the first companies to publicly commit to sustainability, when we made a pledge to eliminate our impact on the environment by 2020, through Mission Zero.

This goal now influences every aspect of our business from manufacturing, people, product to design and innovation.

Green house gas emissions
Actual reduction of Interface GHG emissions by 35% from baseline 1996

ReEntry®

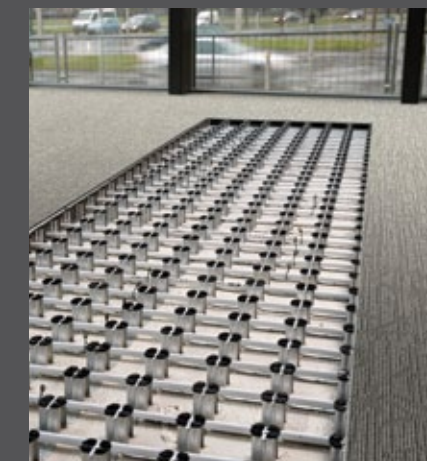
'Closed loop' recycling is an essential part of InterfaceFLOR's Mission Zero sustainability goal for 2020. ReEntry® is our Tile Take Back service, first introduced in 1995, to reclaim carpet at the end of its useful life. Solutions include:

- ReUse - in cooperation with social partner organisations
- Recycling - into products of lower value or into new products of same value (like-for-like recycling)
- Recovery of energy through waste-to-energy solutions

Our latest innovation ReEntry 2.0 represents a breakthrough for the industry. A technology that separates yarn and backing from used carpet tiles, so that they can be recycled into yarn and backing for new carpet tiles.

Intercell®

We have solutions for every space in your building. Our Intercell® cable management system keeps the place looking tidy and the anti-static properties of our tiles make them perfect for use around the electronic equipment found in most government spaces.



Cool Carpet®

We do all we can to reduce greenhouse gas emissions during the entire life cycle of our products. For the emissions we can't yet avoid, we have developed Cool Carpet®. This third party verified scheme enables you to buy carbon neutral carpet. So any greenhouse gases, which are emitted during the full life cycle of the product, are offset or balanced. Cool Carpet® is a standard feature of all our Random Design and microtuft ranges, and we will make it available for any other product in our range on your request.

Renovisions®

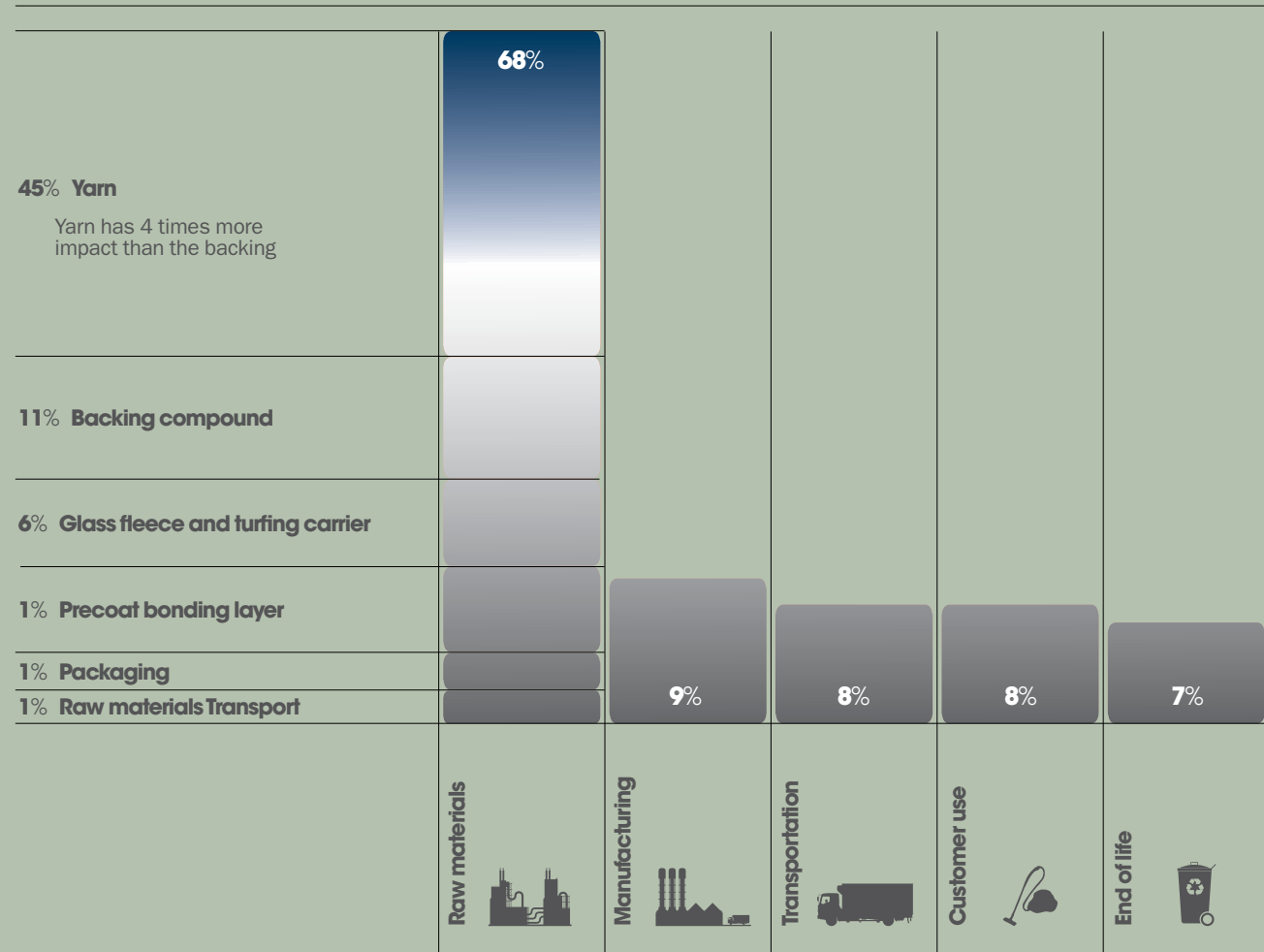
Our modular carpet tile installation system means an entire workplace can be carpeted without disrupting business. With a unique jacking system lifts existing furnishings without the need to empty it. Work can take place out of hours to minimise downtime, and can save on flooring replacement costs.

TacTiles™

TacTiles™ are small, clear plastic adhesive squares, placed underneath the carpet tiles to create a 'floating' floor. With TacTiles™, there's no need for liquid adhesives, so fitting tiles is quick, clean and easy. TacTiles™ can reduce environmental impact by up to 90% compared to traditional adhesive and virtually eliminate emissions. There's also no damage to sub floors, and nothing to stop you lifting or moving the carpet if you need to.



Life cycle assessment



The calculations are based on a 700g carpet tile made with PA6.6 and InterfaceFLOR's Graphlex® backing with the following assumptions: landfilling at end-of-life, no green energy use in the life-cycle, and a product lifetime (use) of 10 years.

Your purchase of a new carpet can make a difference

When defining, which carpet has the least environmental impact, the key is to determine the stages in the life cycle that have the greatest environmental impacts and to focus on these.

InterfaceFLOR uses life cycle assessment (LCA) to assess and continuously improve the impact of every product we launch.

LCA is the scientifically recognised way to assess the environmental performance of a product. It studies all the impacts throughout the life of a carpet tile: from extraction, to production of raw materials, manufacturing, transport, use, maintenance and disposal or recycling at end of life.

Minimising impact

From LCA we know that two thirds of the overall environmental impact of a carpet tile is related to the raw materials needed to manufacture it. The nylon yarn used is the single largest contributor to environmental impact. So while we address all impacts and materials, an important part of our sustainability strategy is focused on the three key areas:

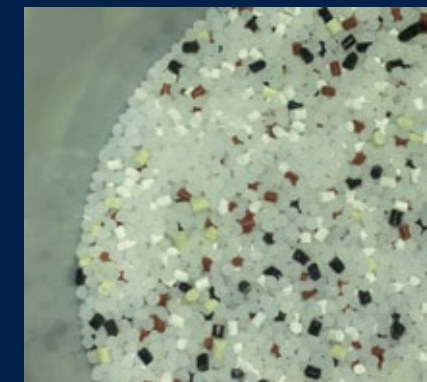


1. Reducing the amount of yarn

Some products are over-engineered and use more resources than necessary. We have successfully minimised use of materials and introduced innovative new products such as our microtuft ranges, which use up to 50% less yarn, without compromising performance.

3. Inventing a new yarn

Finding effective alternatives to nylon remains a major challenge. Current natural alternatives don't meet customers' standards in terms of heavy contract applications, and they come with their own environmental issues as well. We are still continuously researching alternatives.



2. Increasing the amount of recycled yarn

Working with our suppliers we try to ensure that our products include both pre-consumer and post-consumer recycled content.

Biosfera I

In July 2011 we launched our most sustainable product to date: a product containing 100% recycled yarn. This is a significant step in our drive towards Mission Zero, which combines our technical advances to minimise the amount of yarn used and complementary environmental services.

Eliminating waste

We aim to eliminate the concept of waste, not just reduce it. InterfaceFLOR pioneered the concept of modular carpet, which offers greater flexibility and a number of sustainable benefits:

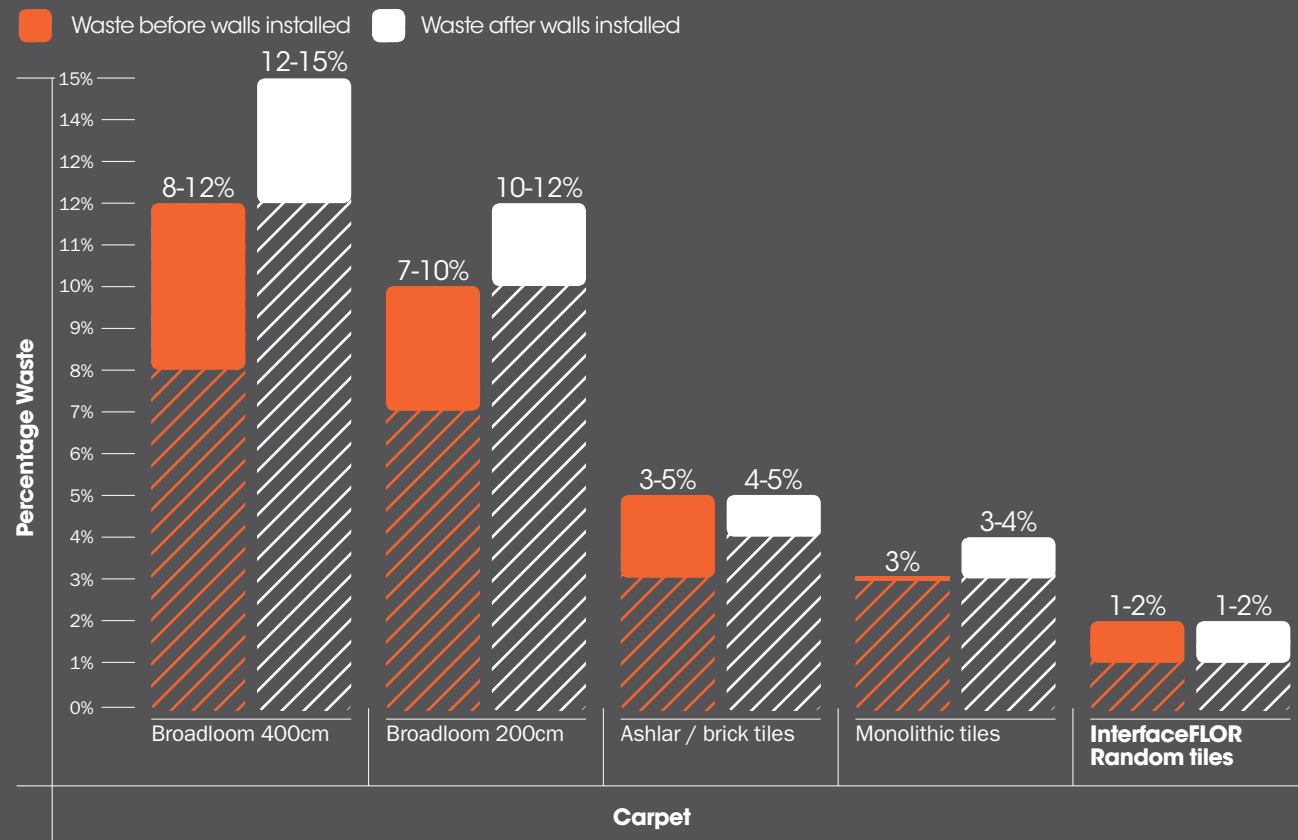
- Carpet tiles are installed and uninstalled quickly and easily, dramatically reducing installation waste. Our random design products bring installation waste down to as low as 1-2%.
- Carpet tiles are easily maintained by replacing individual worn tiles rather than the whole floor, extending the useful life of the product.
- Carpet tiles can easily be uplifted for recycling or re-use elsewhere.

We have also introduced ultrasonic cutting technology, used in the aeronautic industry, which eliminates waste from our manufacturing processes by 310 tonnes annually.

To eliminate waste at the end of the carpet's useful life, we have introduced Tile Take Back programmes and recycling technologies. In 2010 we diverted 12,500 tonnes of carpet and carpet scraps from landfill through our ReEntry® programme.

Installation waste example

For a rectangular building



Installation waste in a rectangular building for different carpet types and installation methods.

EPDs - Transparent and independent information

The validity of environmental claims can be difficult to assess. And a label won't always give you the full answer. To know what a label is really worth, it is necessary to scratch below the surface and figure out who is behind it:

How it is certified?

What factors it covers?

Whether or not it conforms to international standards?

At InterfaceFLOR, we want to be transparent about the environmental impacts of our products to allow you to make informed choices and compare alternatives.

InterfaceFLOR is the first carpet-tile manufacturer in Europe to achieve a third-party-verified Environmental Product Declaration (EPD), which provides comprehensive, uniform details about a product's composition and environmental impact throughout its lifecycle.

The data in EPDs follows clear product category rules and international standards, and is independently verified. The EPD is assessed using the following category:

- Primary energy not renewable
- Primary energy renewable
- Greenhouse potential (GWP 100)
- Ozone degradation potential (ODP)
- Acidification potential (AP)
- Nutrifaction (NP)
- Photochemical oxidant formation (POCP)

This allows for a fair and objective comparison of alternatives - similar to comparing calories and ingredients between food products.

We have a global commitment to having all our products covered by EPDs by 2012.

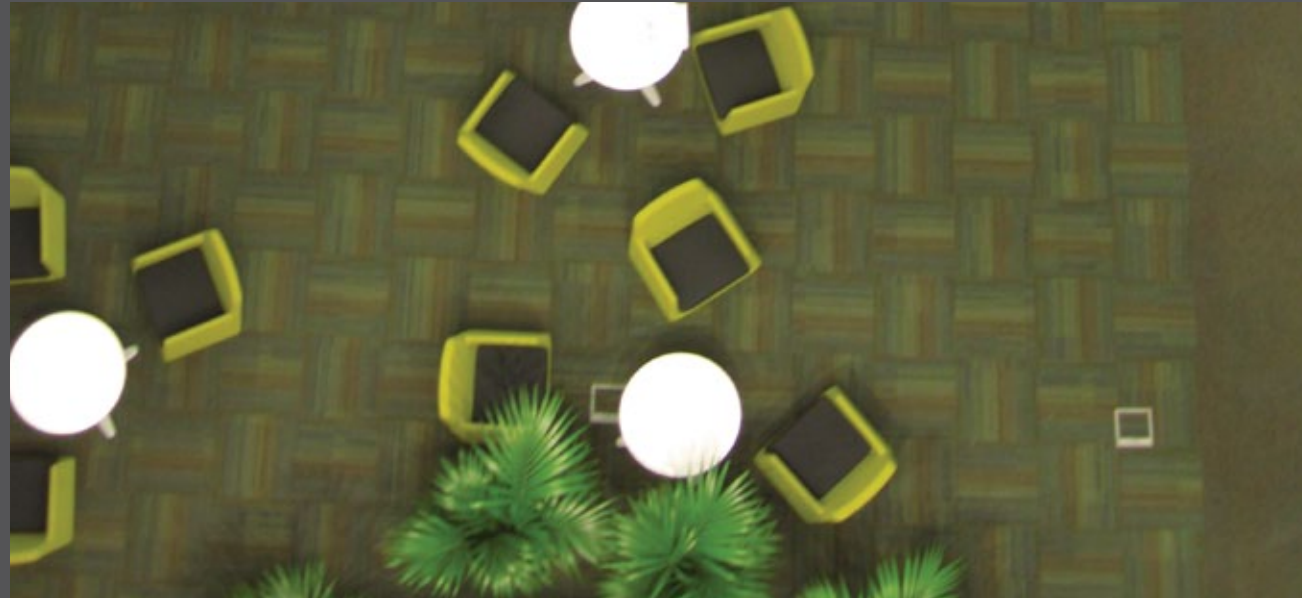
82% reduction

82% reduction in waste sent to landfill since 1996 per unit of production

\$438 million

Cumulative avoided waste costs totalling \$438 million since 1995

Inspire me!



Interfaceflor supports the environment agency's green move

When the Environment Agency set about designing Horizon House, its new national office in Bristol, it was essential that the building reflected its green ethos whilst also delivering services efficiently and effectively.

A sustainable solution

They turned to the Buying Solutions' Flooring framework agreement and partnered with InterfaceFLOR to deliver a modern, yet sustainable, flooring solution for their new office.

An inspiring finish

In order to create an inspiring finish, a combination of InterfaceFLOR's Transformation, Key Features and Chenille Warp products were selected for the project. We also included TacTile™, which provides a more sustainable alternative to liquid adhesive, due to its significantly reduced level of VOCs.

"We have a forward-thinking approach when it comes to sustainability, so it is important that we work with environmentally responsible suppliers that share our values. InterfaceFLOR really impressed us with its extensive range of high quality, design led and sustainable products and so proved the ideal partner for us to work with."

Stuart Kotchie, Programme Manager at the Environment Agency



Interfaceflor helps Birmingham Council find its way

Birmingham City Council has just completed a 20,000m² refurbishment project at its Central Administrative Building (CAB) which saw InterfaceFLOR's innovative carpet tiles used to help create an inspiring and integrated environment.

The solution

The council's architects selected carpet tiles from InterfaceFLOR's Transformation range due to the wide range of colours and designs available, and the durability that the product offers.

Transforming the working environment

The use of InterfaceFLOR's Transformation carpet tiles throughout the office enhanced Birmingham City Council's environmental offering. The highly textured carpet tiles offer durability in heavy traffic areas, improving the durability of the finished design. In addition, the random design of the tiles reduces installation time, maintenance is simplified and waste is minimised. What's more, the Transformation products are made from recycled yarn and manufactured using 100 per cent renewable electricity.

"We wanted to open up the office, and rather than using oppressive barriers to define the different areas, we wanted to utilise the interior design scheme, including the furnishings, to define these areas and help people to navigate the building. As such, it was key that we worked with suppliers that could provide us with an extensive range of designs and colours that would help us to do this."

Barry Adams, Senior Architect at BCC

Inspired! Explore more government sector case studies

For more information or samples:
call: 01274 698503
email: marketing@interfaceflor.co.uk
visit: www.interfaceflor.co.uk/government



Mission Zero:
*our promise to eliminate
any negative impact our company
may have on the environment
by the year 2020.*