

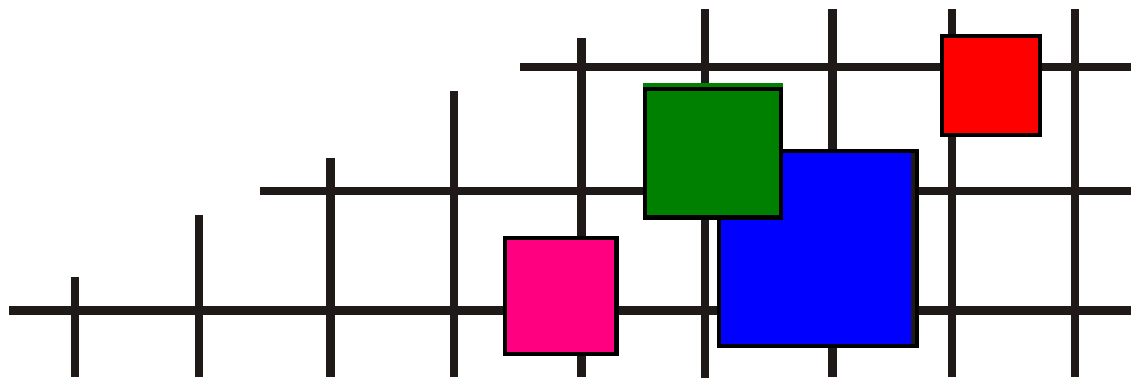
ковровая плитка • ковровые покрытия • ковры и ковровые дорожки • гобеленовые настенные ковры
безопасный пол • грязезащита • аксессуары для лестниц и пола • системы светодиодной подсветки
низкопрофильная система кабельной проводки • сопутствующие товары

СОВРЕМЕННЫЕ НАПОЛЬНЫЕ ПОКРЫТИЯ (ООО «СНП»)

Телефон +7 (495) 916-94-83

E-mail info@s-n-p.ru

Сайт http://www.s-n-p.ru

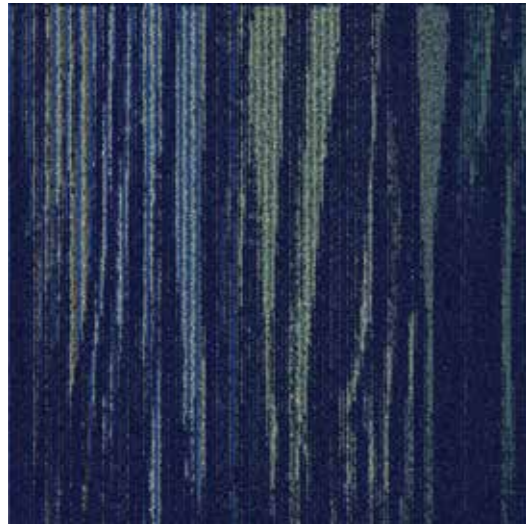


СЕРВИС ВЫСОКОГО КАЧЕСТВА!

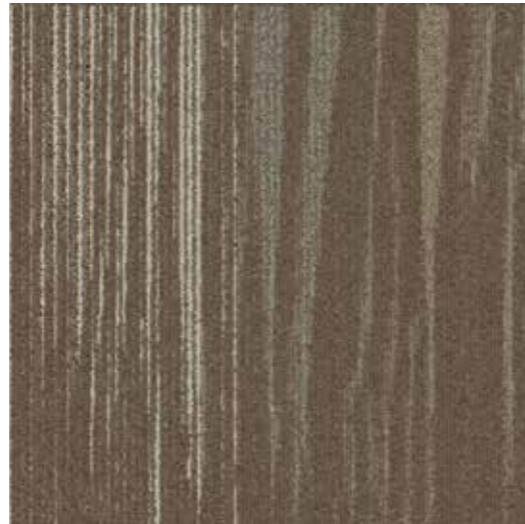
The background of the entire image is a dense, repeating floral pattern in shades of brown and tan. The pattern features stylized leaves and small flowers. Overlaid on this pattern is a network of white, irregular cracks that resemble aged paper or a distressed surface. The cracks are most prominent in the lower half of the image.

Vintage - Reissue

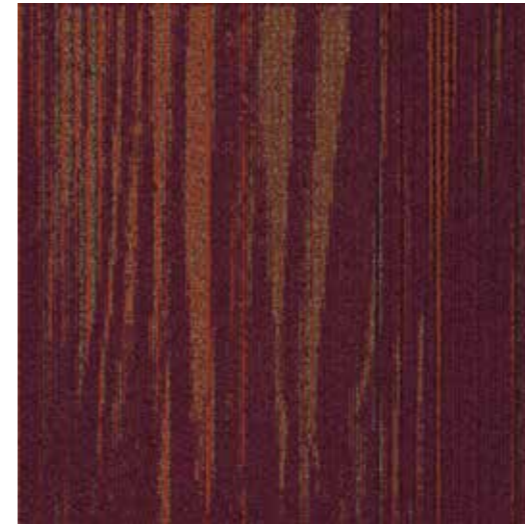
Interface®



344001 Grand Staircase



344002 Gallery



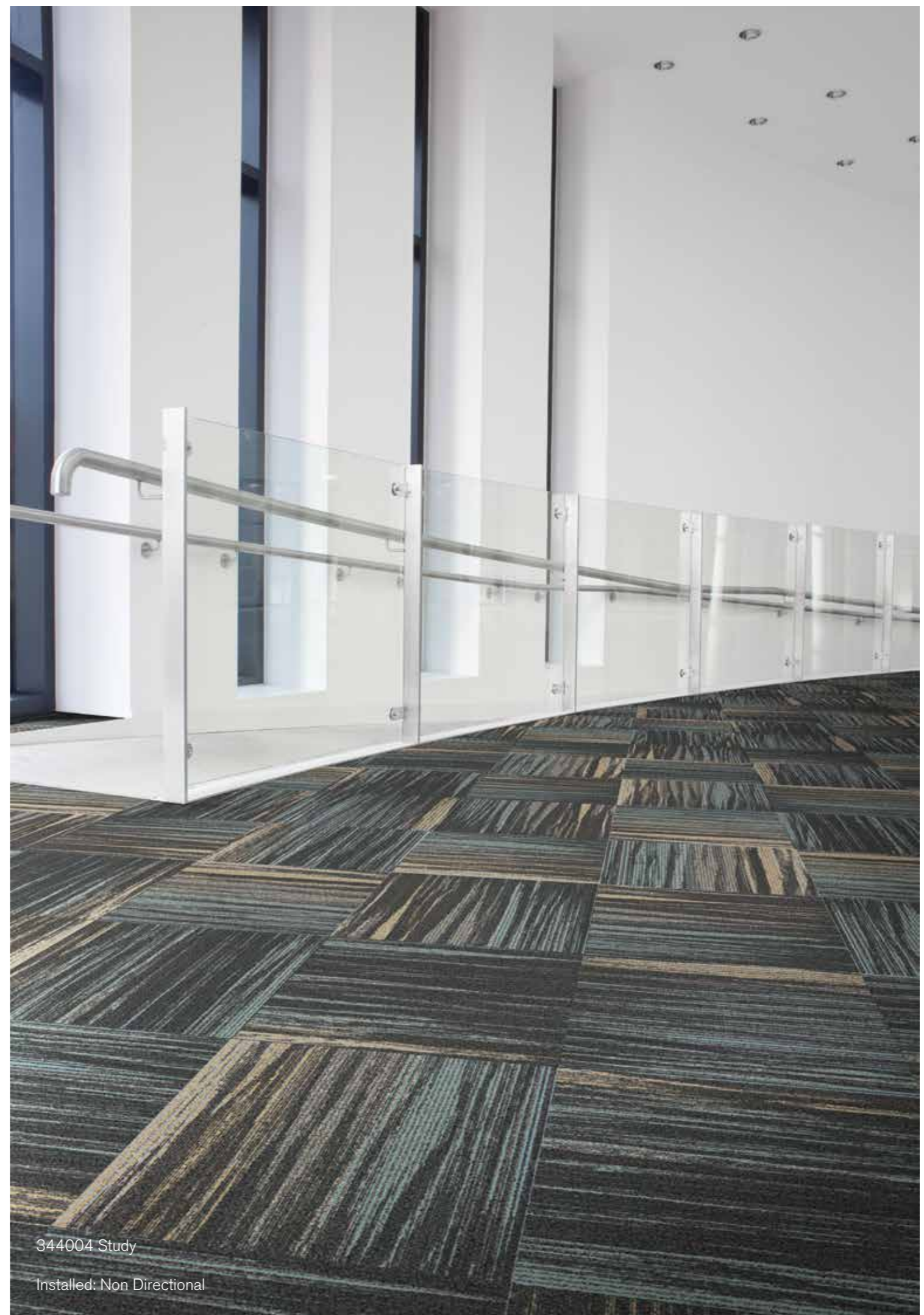
344003 Chamber



344004 Study



344003 Grand Staircase
Installed: Non Directional



344004 Study
Installed: Non Directional

Product Definition	Tufted Cut and Loop Tile
Konstruktion	Getuftete Schlingen-Velours-Qualität
Descripción	Moqueta modular tufting pelo cortado y bucle
Description	Dalle de moquette à velours tufté bouclé et coupé
Type	Tegeltapijt met een combinatie van gesneden- en lussenpool
Descrizione	Velluto e bouclé tufted strutturato

Pile Material	100% BCF Solution Dyed Nylon contains pre-consumer recycled content
Polfasermaterial	100% Polyamid garngefärbt mit recyceltem Anteil (Prä-Konsumenten-Anteil)
Composición Fibra	100% Poliamida BCF tintada en masa con contenido reciclado pre-consumo
Composition	100% Polyamide BCF Teint en masse contenant des éléments recyclés
Poolmateriaal	100% Solution Dyed Polyamide BCF, bevat pre-consumer gerecycled content
Fibra	100% Poliammide BCF tinta in massa con contenuto riciclato pre - consumer

Pile Yarn Weight / Poleinsatzgewicht / Peso Fibra / Poids de fibre / Poolinzetgewicht / Peso Felpa	660g/m ² ± 5%
Total Weight / Gesamtgewicht / Peso Total Poids total / Totaalgewicht / Peso Totale	4654g/m ² ± 5%
Pile Height / Polschichtdicke / Altura Fibra / Hauteur de la fibre / Poolhoogte / Altezza Felpa	3,8 mm ± 0,3 mm
Total Thickness / Gesamtdicke / Espesor Total / Epaisseur totale / Totale dikte / Altezza Totale	7,9 mm ± 0,5 mm
Gauge/Ends 10 cm / Teilung x 10 cm / Galga x 10 cm / Jauge-Rangs par 10 cm / Rijen per 10 cm / Serraggio x 10 cm	5/64 – 50,4
Tufts per m² / Noppenzahl/m ² / Puntadas m ² / Densité du tuft par m ² / Aantal noppen per m ² / Densità Punti	180,000 ± 5%
Backing Type / Rückenkonstruktion / Soporte / Sous-couche / Ruguitvoering / Sottofondo	Graphlex®
Wear Classification / Beanspruchungsklasse / Clasificación al tráfico / Classement Gebruiksintensiteit / Resistenza all'usura	Heavy Contract (EN 1307) Class 33 / LC2

Style	30344
4m ² - 16 tiles per box (50 x 50 cm ± 0,15%)	

Radiant Panel / Schwerentflammbarkeit	(EN ISO 9239/1) Euroclass Bfl s1 (EN ISO 13501)
Hot Metal Nut	Pass, low radius of effects of ignition (BS 4790)
Dimensional Stability / Dimensionsstabilität / Estabilidad Dimensional / Stabilité dimensionnelle / Dimensionele stabiliteit / Test Stabilità dimensionale	≤ 0,2% (ISO 2551 / EN 986)

Sound Absorption					
125Hz	250Hz	500Hz	1000Hz	2000Hz	4000Hz
0.02	0.03	0.10	0.21	0.36	0.42

EN 14041
CE
DOP: 1037/119485
textile floor covering
EN 1307

SAAACFFD

EN ISO 9239/1
Euroclass Bfl s1

BS 4790

ISO 2551 / EN 986

25dB ≥ 2,4 7 0.20

Bfl-s1 DS

Light Value

Product	Colour No	Colour Name	L Value*	Y Value*
Reissue	344001	Grand Staircase	25.1	4.5
	344002	Gallery	41.1	12.0
	344003	Chamber	27.0	5.1
	344004	Study	29.8	6.2

* **Light Value:** L Value = L according to CIE L*a*b* colour space, Y Value = Light Reflectance Value according to BS 8493
Lichtreflexionswert: L-Wert = L gemäß CIE L*a*b* Farbspektrum, Y-Wert = Lichtreflexionswert gemäß British Standard BS 8493

Valores de Reflectancia de Luz: Valor L= L según CIE L*a*b* espacio de color, Valor Y = Valor de reflectancia de luz según el estándar británico BS 8493

Valeurs concernant la lumière: Valeur L = L faisant référence à la méthode CIE L*a*b* pour la couleur, Valeur Y = Valeurs de réflectance de la lumière selon le British Standard BS 8493

Licht waarden: L Waarde = L volgens CIE L*a*b*kleurruimte, Y Waarde = Licht Reflectie Waarde volgens BS 8493

Indici di riflettanza alla luce: Indice L= L secondo CIE L*a*b* colour space, Indice Y= Indice di riflettanza alla luce secondo la norma BS 8493

Environmental Data Sheet

Construction			
Yarn system	100% BCF Solution Dyed PA 6,6		
Backing system	Graphlex®		
Recycled Content	Total Recycled Content	Pre consumer	Post consumer
Product average	50,52%	50,52%	0,00%
Yarn	22,81%	22,81%	0,00%
Recycled content can be subject to differences between colours. See details for individual colours on next page.			
Carbon Footprint			
Global Warming Potential (kgs CO2 equivalents/sq meter)			
Full life-cycle carbon footprint (following our EPD results or EPD calculation method)	Raw materials and Production:	9.4 kg CO ₂ eq./m ²	
	Delivery and installation:	0.32 kg CO ₂ eq./m ²	
	Use (10 years):	2 kg CO ₂ eq./m ²	
	End of life (waste to energy):	4.8 kg CO ₂ eq./m ²	
	TOTAL (10 years' lifetime):	16.52 kg CO ₂ eq./m ²	
CO ₂ compensation	Carbon neutral Cool Carpet® is standard		
Manufacturing			
Location	Scherpenzeel, NL Factory is certified ISO 14001 since 1996 and ISO 9001 since 1990		
Installation Impacts			
TacTiles™	Optimised for glue-free installation with TacTiles™ connectors with virtually zero VOCs		
Installation Waste	In a typical installation* using the installation method below:		
	Non-directional – 1-2% installation waste		
	For reference: 2 metre wide broadloom typically generates 7-10 % installation waste		
* In a rectangular building, installed before walls.			
End-of-life			
Alternatives to landfill	Reuse: Can be cleaned and reused in a non-critical location to extend its useful life		
	Recycling: Can be returned through the Interface ReEntry scheme and be re-used as raw material in new carpet tiles		
	Waste-to-Energy: Can be incinerated in appropriate waste to energy plant		
Indoor Air Quality			
GUT (Gemeinschaft umweltfreundlicher Teppichboden)	The product passes all requirements of GUT's testing criteria regarding hazardous substances, emissions and odour. GUT PRODIS Certificate no. 5AAACFFD		
CRI (Carpet & Rug Institute)	Compliant to LEED IQ 4.3 credit (tested in Eurofins to the equivalent test of the CRI Green Label Plus)		
Compliance to Green Building Schemes			
See next page to check how our products contribute to the main green building certification schemes (BREEAM, LEED, HQE and DGNB)			
Type III Environmental Product Declaration			
EPD according to ISO 14025	This product has a type III Environmental Product Declaration, EPD-IFF-2011711-E		

Recycled content – colour level						
Colourway	Total recycled content	Pre-consumer recycled content	Post-consumer recycled content	Yarn recycled content	Pre-consumer yarn recycled content	Post-consumer yarn recycled content
344001 Grand Staircase	50,80%	50,80%	0,00%	23,19%	23,19%	0,00%
344002 Gallery	49,73%	49,73%	0,00%	21,79%	21,79%	0,00%
344003 Chamber	50,99%	50,99%	0,00%	24,53%	24,53%	0,00%
344004 Study	50,59%	50,59%	0,00%	21,71%	21,71%	0,00%
Compliance to Green Building Schemes						
BREEAM (UK and international)	BRE Green Guide Ratings: Office - A rated Education - A rated Health Care - A rated Retail (by fashion) - A+ rated Potential contribution to following categories and credits: Hea 02 - Indoor air quality – minimising sources of air pollution Hea 05 - Acoustic Performance Mat 01 - Life Cycle Impacts Mat 05 - Designing for robustness Wst 01 - Construction Waste Management					
LEED 2009 US	Potential direct or indirect contribution to following categories and credits: Indoor Environmental Quality Credit 4.1 Low Emitting Materials: Adhesive & Sealants Credit 4.3 Low Emitting Materials: Carpet Systems Materials and Resources Credit 2.1 Construction Waste Management Credit 4.1 Recycled content Credit 5.1 Regional Materials Innovation and Design Credits 1-4 1 Climate Neutral Products Credits 1-4 1 Pilot Credit 43, Certified Products					
HQE (FR)	Potential direct or indirect contribution to several points within following targets: 2. Integrated choice of products and construction materials 3. Low site nuisance 9. Acoustic comfort 10. Visual comfort 11. No unpleasant smells 12. Sanitary quality of areas 13. Sanitary air quality					
DGNB (D)	Potential direct or indirect contribution to following criterion ENVIRONMENTAL QUALITY ENV1.2 Local Environmental Impact ECONOMIC QUALITY ECO1.1 Building-Related Lifecycle Costs ECO2.1 Efficient Use of Space SOCIOCULTURAL AND FUNCTIONAL QUALITY SOC1.2 Indoor Air Quality SOC1.3 Acoustic Comfort TECHNICAL QUALITY TEC1.5 Ease of Cleaning and Maintenance TEC1.6 Ease of Dismantling and Recycling					



TacTiles™

- A smarter, more sustainable way to install carpet tiles
- No need for liquid adhesives
- Fitting tiles is quick, clean and easy and the process virtually eliminates emissions
- No damage to sub floors, and nothing to stop you lifting or moving the carpet whenever you want



Entrance Matting

Incredibly tough, hard-wearing and practical; indoor entrance matting acts as the first line of defence to any interior by removing almost 100% of dirt, rain and mud before it's walked into your flooring.

Both of the products in our commercial entrance matting range – Barricade and Foyer – are resilient, functional, easy to maintain and stylish. And it's for these reasons that our barrier matting forms an essential part of any maintenance programme needed to keep your floorcovering looking its very best.