

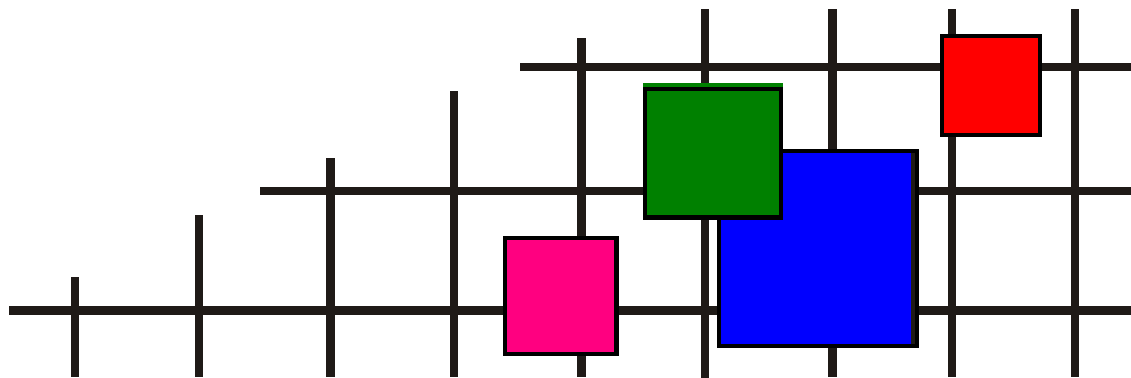
ковровая плитка • ковровые покрытия • ковры и ковровые дорожки • гобеленовые настенные ковры
безопасный пол • грязезащита • аксессуары для лестниц и пола • системы светодиодной подсветки
низкопрофильная система кабельной проводки • сопутствующие товары

СОВРЕМЕННЫЕ НАПОЛЬНЫЕ ПОКРЫТИЯ (ООО «СНП»)

Телефон +7 (495) 916-94-83

E-mail info@s-n-p.ru

Сайт http://www.s-n-p.ru

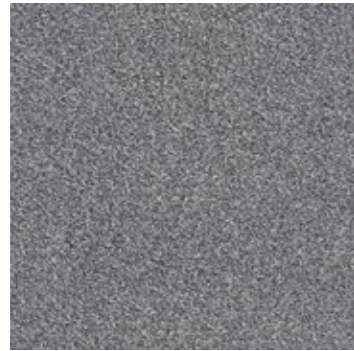


СЕРВИС ВЫСОКОГО КАЧЕСТВА!



Sherbet Fizz

Interface®



5551 Light Grey



5552 Steel



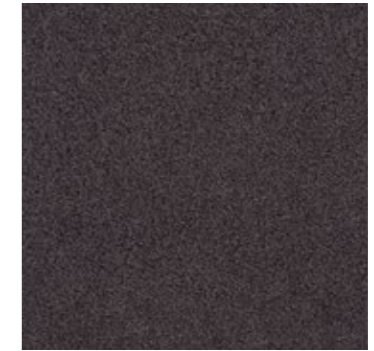
5553 Black



5554 Sahara



5555 Nougat



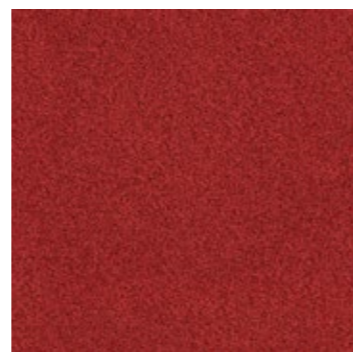
5556 Mauve



5557 Orangeade



5558 Pink



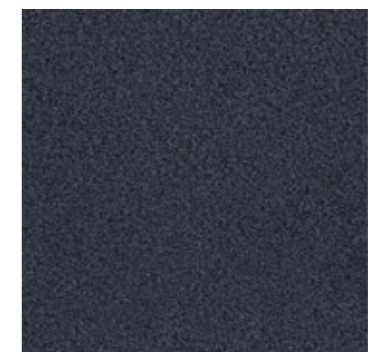
5559 Pepper



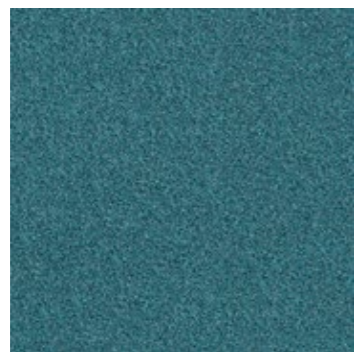
5560 Sky Blue



5561 Marine



5562 Midnight



5563 Turquoise



5564 Petrol



5565 Designer Blue



5567 Lime Green



5568 Pistachio



5559 Modern Brown

Sherbet Fizz

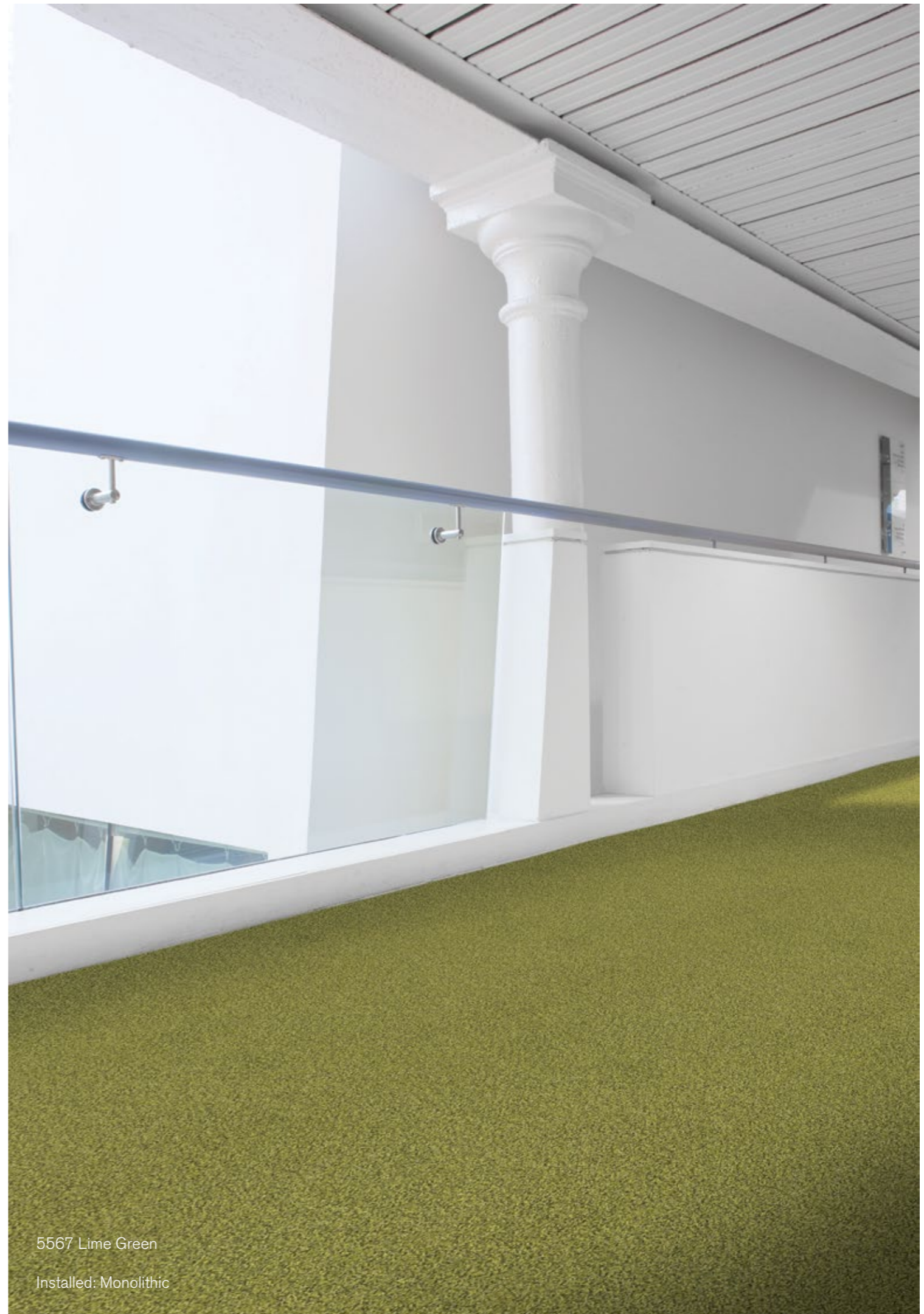


5559 Pepper, 5567 Lime Green, 5560 Sky Blue,
5565 Designer Blue, 5551 Light Grey

Installed: Monolithic



Installed: Monolithic



5567 Lime Green

Installed: Monolithic





Case Study: HOK, UK

Installed: Monolithic



Case Study: HOK, UK

Installed: Monolithic

Product Definition	Tufted Plain Textured Loop Tile
Konstruktion	Getuftete texturierte Schlingen-Qualität
Descripción	Moqueta modular tufting bucle
Description	Dalle de moquette à velours tufté bouclé texturé
Type	Getufte gestructureerde bouclé
Descrizione	Bouclè tufted a grosso riccio

Pile Material	100% BCF Nylon
Polfasermaterial	100% Polyamid
Composición Fibra	100% Poliamida BCF
Composition	100% Polyamide BCF
Poolmateriaal	100% Polyamide BCF
Fibra	100% Poliammide BCF

Pile Yarn Weight / Poleinsatzgewicht / Peso Fibra / Poids de fibre / Poolinzetgewicht / Peso Felpa	930g/m ² ± 5%
Total Weight / Gesamtgewicht / Peso Total Poids total / Totaalgewicht / Peso Totale	4720g/m ² ± 5%
Pile Height / Polschichtdicke / Altura Fibra / Hauteur de la fibre / Poolhoogte / Altezza Felpa	4,9 mm ± 0,3 mm
Total Thickness / Gesamtdicke / Espesor Total / Epaisseur totale / Totale dikte / Altezza Totale	8,5 mm ± 0,3 mm
Gauge/Ends 10 cm / Teilung x 10 cm / Galga x 10 cm / Jauge-Rangs par 10 cm / Rijen per 10 cm / Serraggio x 10 cm	1/10 – 40
Tufts per m² / Noppenzahl/m ² / Puntadas m ² / Densité du tuft par m ² / Aantal noppen per m ² / Densità Punti	112,000 ± 5%
Backing Type / Rückenkonstruktion / Soporte / Sous-couche / Ruguitvoering / Sottofondo	Graphlex®
Wear Classification / Beanspruchungsklasse / Clasificación al tráfico / Classement Gebruiksintensiteit / Resistenza all'usura	Heavy Contract (EN 1307) Class 33 / LC3

Style	60545
4m ² - 16 tiles per box (50 x 50 cm ± 0,2%)	

Radiant Panel / Schwerentflammbarkeit	(EN ISO 9239/1) Euroclass Cfl s1 (EN ISO 13501)
Hot Metal Nut	Pass, low radius of effects of ignition (BS 4790)
Dimensional Stability / Dimensionsstabilität / Estabilidad Dimensional / Stabilité dimensionnelle / Dimensionele stabiliteit / Test Stabilità dimensionale	≤ 0,2% (ISO 2551 / EN 986)

Sound Absorption					
125Hz	250Hz	500Hz	1000Hz	2000Hz	4000Hz
0.01	0.05	0.10	0.23	0.33	0.44

EN 14041

DOP: 1037/115672
textile floor covering
EN 1307

Cert. ENP 477

Monolithic

25dB

≥ 2,4

≥ 6

0.20

Cfl-s1

DS

≤ 10³ J

Light Value

Product	Colour No	Colour Name	L Value*	Y Value*
Sherbet Fizz	5551	Light Grey	53,7	21,7
	5552	Steel	35,7	8,9
	5553	Black	26,6	5,0
	5554	Sahara	58,0	26,0
	5555	Nougat	35,3	8,6
	5556	Mauve	31,1	6,7
	5557	Orangeade	49,6	18,1
	5558	Pink	39,0	10,7
	5559	Pepper	36,1	9,1
	5560	Sky Blue	42,5	12,8
	5561	Marine	31,0	6,7
	5562	Midnight	28,8	5,8
	5563	Turquoise	43,6	13,6
	5564	Petrol	40,1	11,3
	5565	Designer Blue	34,0	8,0
	5567	Lime Green	48,7	17,4
	5568	Pistachio	41,6	12,2
5569	Modern Brown	38,9	10,6	
9199	Buffalo	25,8	4,7	

* **Light Value:** L Value = L according to CIE L*a*b* colour space, Y Value = Light Reflectance Value according to BS 8493
Lichtreflexionswerte: L-Wert = L gemäß CIE L*a*b* Farbspektrum, Y-Wert = Lichtreflexionswert gemäß British Standard BS 8493
Valores de Reflectancia de Luz: Valor L = L según CIE L*a*b* espacio de color, Valor Y = Valor de reflectancia de luz según el estándar británico BS 8493
Valeurs concernant la lumière: Valeur L = L faisant référence à la méthode CIE L*a*b* pour la couleur, Valeur Y = Valeurs de réflectance de la lumière selon le British Standard BS 8493
Licht waarden: L Waarde = L volgens CIE L*a*b*kleurruimte, Y Waarde = Licht Reflectie Waarde volgens BS 8493
Indici di riflettanza alla luce: Indice L = L secondo CIE L*a*b* colour space, Indice Y = Indice di riflettanza alla luce secondo la norma BS 8493

Environmental Data Sheet

Construction			
Yarn system	100% BCF Solution Dyed PA 6		
Backing system	Graphlex®		
Recycled Content	Total Recycled Content	Pre consumer	Post consumer
Product average	44,98%	44,98%	0,00%
Yarn	0,00%	0,00%	0,00%
Recycled content can be subject to differences between colours. See details for individual colours on next page.			
Carbon Footprint			
Global Warming Potential (kgs CO2 equivalents/sq meter)			
Full life-cycle carbon footprint (following our EPD results or EPD calculation method)	Raw materials and Production:	14.4 kg CO ₂ eq./m ²	
	Delivery and installation:	0.33 kg CO ₂ eq./m ²	
	Use (10 years):	2 kg CO ₂ eq./m ²	
	End of life (waste to energy):	4.9 kg CO ₂ eq./m ²	
	TOTAL (10 years' lifetime):	21.63 kg CO ₂ eq./m ²	
CO ₂ compensation	Carbon neutral Cool Carpet® is optional		
Manufacturing			
Location	Scherpenzeel, NL Factory is certified ISO 14001 since 1996 and ISO 9001 since 1990		
Installation Impacts			
TacTiles™	Optimised for glue-free installation with TacTiles™ connectors with virtually zero VOCs		
Installation Waste	In a typical installation* using the installation method below:		
	Monolithic - 3-4% installation waste		
	For reference: 2 metre wide broadloom typically generates 7-10 % installation waste		
* In a rectangular building, installed before walls.			
End-of-life			
Alternatives to landfill	Reuse: Can be cleaned and reused in a non-critical location to extend its useful life		
	Recycling: Can be returned through the Interface ReEntry scheme and be re-used as raw material in new carpet tiles		
Waste-to-Energy: Can be incinerated in appropriate waste to energy plant			
Indoor Air Quality			
GUT (Gemeinschaft umweltfreundlicher Teppichboden)	The product passes all requirements of GUT's testing criteria regarding hazardous substances, emissions and odour. GUT PRODIS Certificate no. 39BFFD83		
CRI (Carpet & Rug Institute)	Compliant to LEED IQ 4.3 credit (tested in Eurofins to the equivalent test of the CRI Green Label Plus)		
Compliance to Green Building Schemes			
See next page to check how our products contribute to the main green building certification schemes (BREEAM, LEED, HQE and DGNB)			
Type III Environmental Product Declaration			
EPD according to ISO 14025	This product has a type III Environmental Product Declaration, EPD-IFF-2011611-E		

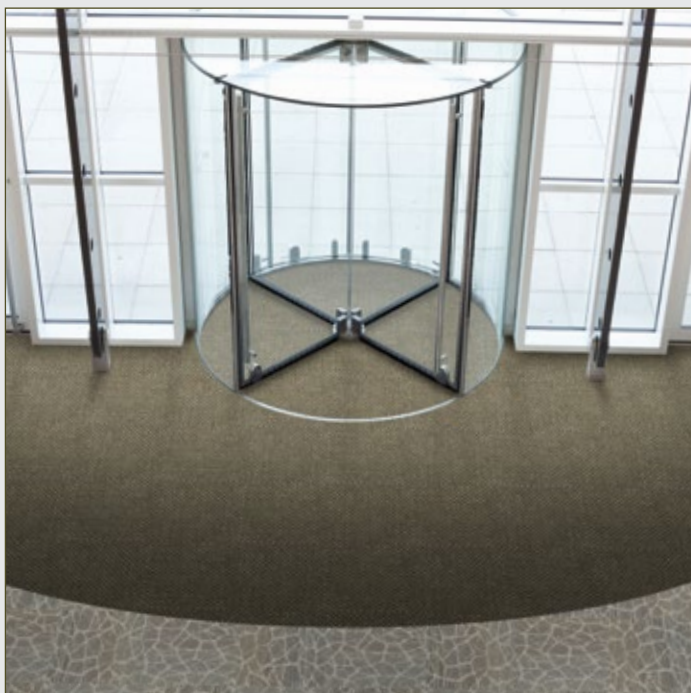
Recycled content – colour level						
Colourway	Total recycled content	Pre-consumer recycled content	Post-consumer recycled content	Yarn recycled content	Pre-consumer yarn recycled content	Post-consumer yarn recycled content
5551 Light Grey	44,98%	44,98%	0,00%	0,00%	0,00%	0,00%
5552 Steel	44,98%	44,98%	0,00%	0,00%	0,00%	0,00%
5553 Soft Liquorice	44,98%	44,98%	0,00%	0,00%	0,00%	0,00%
5554 Sahara	44,98%	44,98%	0,00%	0,00%	0,00%	0,00%
5555 Nougat	44,98%	44,98%	0,00%	0,00%	0,00%	0,00%
5556 Blackberry	44,98%	44,98%	0,00%	0,00%	0,00%	0,00%
5557 Orangeade	44,98%	44,98%	0,00%	0,00%	0,00%	0,00%
5558 Pink	44,98%	44,98%	0,00%	0,00%	0,00%	0,00%
5559 Pepper	44,98%	44,98%	0,00%	0,00%	0,00%	0,00%
5560 Skyblue	44,98%	44,98%	0,00%	0,00%	0,00%	0,00%
5561 Marine	44,98%	44,98%	0,00%	0,00%	0,00%	0,00%
5562 Midnight	44,98%	44,98%	0,00%	0,00%	0,00%	0,00%
5563 Turquoise	44,98%	44,98%	0,00%	0,00%	0,00%	0,00%
5564 Petrol	44,98%	44,98%	0,00%	0,00%	0,00%	0,00%
5565 Designer Blue	44,98%	44,98%	0,00%	0,00%	0,00%	0,00%
5567 Lime Green	44,98%	44,98%	0,00%	0,00%	0,00%	0,00%
5568 Pistachio	44,98%	44,98%	0,00%	0,00%	0,00%	0,00%
5569 Modern Brown	44,98%	44,98%	0,00%	0,00%	0,00%	0,00%

Compliance to Green Building Schemes	
BREEAM (UK and international)	<p>BRE Green Guide Ratings:</p> <ul style="list-style-type: none"> Office - B rated Education - B rated Health Care - A rated Retail (by fashion) - A+ rated <p>Potential contribution to following categories and credits:</p> <ul style="list-style-type: none"> Hea 02 - Indoor air quality – minimising sources of air pollution Hea 05 - Acoustic Performance Mat 01 - Life Cycle Impacts Mat 05 - Designing for robustness Wst 01 - Construction Waste Management
LEED 2009 US	<p>Potential direct or indirect contribution to following categories and credits:</p> <ul style="list-style-type: none"> Indoor Environmental Quality <ul style="list-style-type: none"> Credit 4.1 Low Emitting Materials: Adhesive & Sealants Credit 4.3 Low Emitting Materials: Carpet Systems Materials and Resources <ul style="list-style-type: none"> Credit 2.1 Construction Waste Management Credit 4.1 Recycled content Credit 5.1 Regional Materials Innovation and Design <ul style="list-style-type: none"> Credits 1-4 1 Pilot Credit 43, Certified Products
HQE (FR)	<p>Potential direct or indirect contribution to several points within following targets:</p> <ul style="list-style-type: none"> 2. Integrated choice of products and construction materials 3. Low site nuisance 9. Acoustic comfort 10. Visual comfort 11. No unpleasant smells 12. Sanitary quality of areas 13. Sanitary air quality
DGNB (D)	<p>Potential direct or indirect contribution to following criterion</p> <ul style="list-style-type: none"> ENVIRONMENTAL QUALITY <ul style="list-style-type: none"> ENV1.2 Local Environmental Impact ECONOMIC QUALITY <ul style="list-style-type: none"> ECO1.1 Building-Related Lifecycle Costs ECO2.1 Efficient Use of Space SOCIOCULTURAL AND FUNCTIONAL QUALITY <ul style="list-style-type: none"> SOC1.2 Indoor Air Quality SOC1.3 Acoustic Comfort TECHNICAL QUALITY <ul style="list-style-type: none"> TEC1.5 Ease of Cleaning and Maintenance TEC1.6 Ease of Dismantling and Recycling



TacTiles™

- A smarter, more sustainable way to install carpet tiles
- No need for liquid adhesives
- Fitting tiles is quick, clean and easy and the process virtually eliminates emissions
- No damage to sub floors, and nothing to stop you lifting or moving the carpet whenever you want



Entrance Matting

Incredibly tough, hard-wearing and practical; indoor entrance matting acts as the first line of defence to any interior by removing almost 100% of dirt, rain and mud before it's walked into your flooring.

Both of the products in our commercial entrance matting range – Barricade and Foyer – are resilient, functional, easy to maintain and stylish. And it's for these reasons that our barrier matting forms an essential part of any maintenance programme needed to keep your floorcovering looking its very best.