

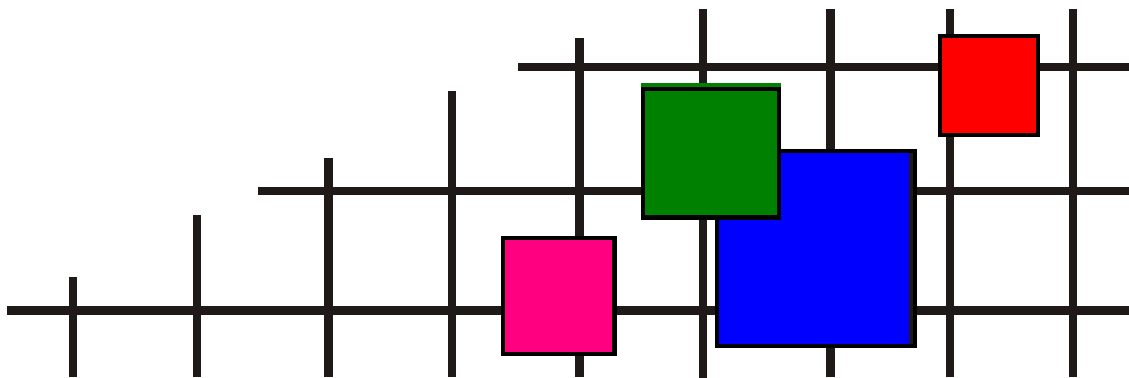
ковровая плитка • ковровые покрытия • ковры и ковровые дорожки • гобеленовые настенные ковры  
безопасный пол • грязезащита • аксессуары для лестниц и пола • системы светодиодной подсветки  
низкопрофильная система кабельной проводки • сопутствующие товары

# СОВРЕМЕННЫЕ НАПОЛЬНЫЕ ПОКРЫТИЯ (ООО «СНП»)

**Телефон** +7 (495) 916-94-83

**E-mail** info@s-n-p.ru

**Сайт** http://www.s-n-p.ru



СЕРВИС ВЫСОКОГО КАЧЕСТВА!

100%  
Recycled  
Nylon

# Monochrome

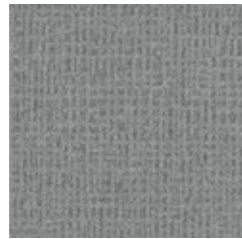
Interface®

# Monochrome

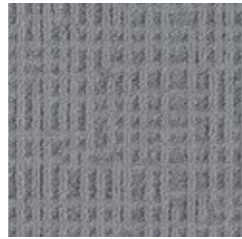
---



346690 Millstone



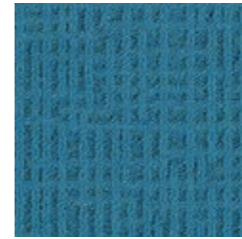
346691 Platinum



346702 Mercury



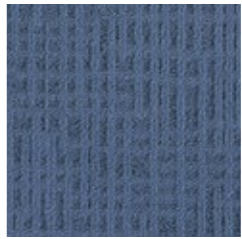
346703 Flemish Blue



346704 Pacific



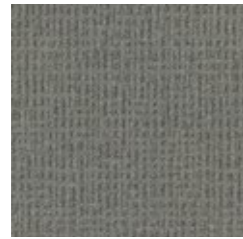
346705 Peacock



346706 Lupin



346707 Flag Blue



346692 Titanium



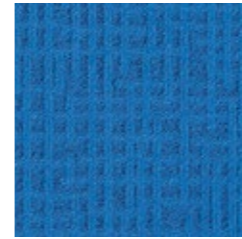
346693 Felt



346708 Lobelia



346709 Nightshadow



346710 Blue



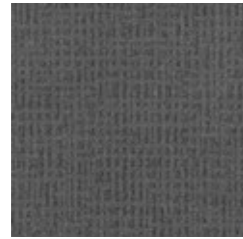
346711 Iris



346712 Danube



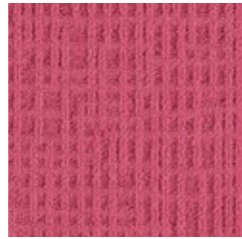
346713 Elderberry



346694 Storm



346695 Seal



346714 Very Berry



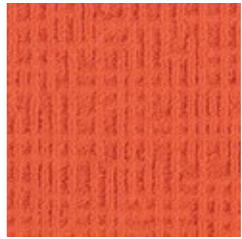
346715 Lilac Haze



346716 Redwood



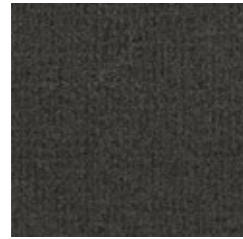
346717 Damson



346718 Orange



346719 Gerbera



346696 Carbon



346697 Black



346720 Terra Firma



346721 Wine Berry



346722 Malt



346723 Putty



346724 Rhino



346725 Coffee Bean



346698 Silver



346699 Surf



346726 Cream



346727 Caraway



346728 Briar



346729 Havana



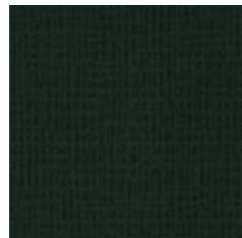
346730 Barley



346731 Castor



346700 Jade



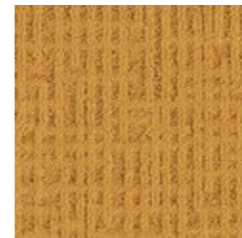
346701 Jungle



346732 Papyrus



346733 Bullrush



346734 Spun Gold



346735 Dandelion



346736 Meadow



346737 Yew

Monochrome



346705 Peacock, 346704 Pacific, 346699 Surf & 346718 Orange

Installed: Monolithic

Monochrome



346734 Spun Gold, 346735 Dandelion, 346731 Castor,  
346728 Briar, 346730 Barley, 346718 Orange, 346719 Gerbera,  
346717 Damson, 346716 Redwood & 346721 Wine Berry

Installed: Monolithic

Monochrome



346690 Millstone, 346723 Putty, 346724 Rhino,  
346729 Havana, 346725 Coffee Bean

Installed: Monolithic

<b>Product Definition</b>	Tufted Patterned Structured Loop Tile
Konstruktion	Tuftgemusterte strukturierte Schlingenqualität
Descripción	Moqueta modular tufting bucle estructurado con diseño
Description	Dalle de moquette à velours tufté bouclé structuré
Type	Getufte gedessineerde gestructureerde bouclé
Descrizione	Bouclé tufted strutturato

<b>Pile Material</b>	100% BCF Solution Dyed Nylon contains pre- and post-consumer recycled content
Polfasermaterial	100% Polyamid garngefärbt mit recyceltem Anteil (Präund
Composición Fibra	Post-Konsumenten-Anteil
Composition	100% Poliamida BCF tintada en masa con contenido reciclado pre y post-consumo
Poolmateriaal	100% Polyamide BCF Teint en masse contenant des éléments recyclés pré et post-consommation
Fibra	100% Solution Dyed Polyamide BCF, bevat pre- en post-consumer gerecycled content
	100% Poliammide BCF tinta in massa con contenuto riciclato pre- e post - consumer

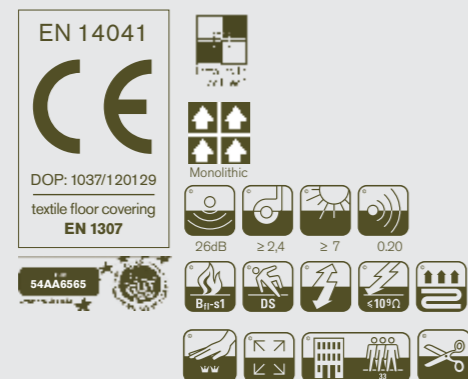
<b>Pile Yarn Weight</b> / Poleinsatzgewicht / Peso Fibra / Poids de fibre / Poolinzetgewicht / Peso Felpa	787g/m <sup>2</sup> ± 5%
<b>Total Weight</b> / Gesamtgewicht / Peso Total Poids total / Totaalgewicht / Peso Totale	4714g/m <sup>2</sup> ± 5%
<b>Pile Height</b> / Polschichtdicke / Altura Fibra / Hauteur de la fibre / Poolhoogte / Altezza Felpa	3,8 mm ± 0,3mm
<b>Total Thickness</b> / Gesamtdicke / Espesor Total / Epaisseur totale / Totale dikte / Altezza Totale	8,2 mm ± 0,5mm
<b>Tufts per m<sup>2</sup></b> / Noppenzahl/m <sup>2</sup> / Puntadas m <sup>2</sup> / Densité du tuft par m <sup>2</sup> / Aantal noppen per m <sup>2</sup> / Densità Punti	165,480 ± 5%
<b>Backing Type</b> / Rückenkonstruktion / Soporte / Sous-couche / Ruguitvoering / Sottofondo	Graphlex®
<b>Wear Classification</b> / Beanspruchungsklasse / Clasificación al tráfico / Classement Gebruiksintensiteit / Resistenza all'usura	Heavy Contract (EN 1307) Class 33 / LC2

<b>Style</b>	34669
4m <sup>2</sup> - 16 tiles per box (50 x 50 cm ± 0,2%)	

<b>Radiant Panel /</b> Schwerentflammbarkeit	(EN ISO 9239/1) Euroclass Bfl s1 (EN ISO 13501)
<b>Hot Metal Nut</b>	Pass, low radius of effects of ignition (BS 4790)

<b>Dimensional Stability</b> / Dimensionsstabilität	≤ 0,2% (EN 986 / EN 986)
Estabilidad Dimensional / Stabilité dimensionnelle	
Dimensionele stabiliteit / Test Stabilità dimensionale	

<b>Sound Absorption</b>					
<b>125Hz</b>	<b>250Hz</b>	<b>500Hz</b>	<b>1000Hz</b>	<b>2000Hz</b>	<b>4000Hz</b>
0.00	0.05	0.10	0.20	0.40	0.45



## Light Value

Product	Colour No	Colour Name	L Value*	Y Value*
<b>Monochrome</b>	346690	Millstone	537	21.7
	346691	Platinum	497	18.1
	346692	Titanium	439	13.8
	346693	Felt	387	10.5
	346694	Storm	348	8.4
	346695	Seal	285	5.7
	346696	Carbon	283	5.6
	346697	Black	182	2.6
	346698	Silver	589	26.9
	346699	Surf	534	21.4
	346700	Jade	259	4.7
	346701	Jungle	21.0	3.2
	346702	Mercury	465	15.7
	346703	Flemish Blue	327	7.4
	346704	Pacific	353	8.7
	346705	Peacock	272	5.2
	346706	Lupin	373	9.7
	346707	Flag Blue	250	4.7
	346708	Lobelia	240	4.1
	346709	Nightshadow	205	3.1
	346710	Blue	327	7.4
	346711	Iris	287	5.7
	346712	Danube	326	7.4
	346713	Elderberry	21.6	3.4
	346714	Very Berry	41.8	12.4
	346715	Lilac Haze	360	9.0
	346716	Redwood	233	3.9
	346717	Damson	267	5.0
	346718	Orange	483	17.1
	346719	Gerbera	365	9.3
	346720	Terra Firma	32.1	7.1
	346721	Wine Berry	228	3.7
	346722	Malt	577	25.6
	346723	Putty	39.4	10.9
	346724	Rhino	305	6.4
	346725	Coffee Bean	21.4	3.4
	346726	Cream	64.3	33.2
	346727	Caraway	54.1	22.0
	346728	Briar	42.8	13.1
	346729	Havana	265	4.9
	346730	Barley	56.0	23.9
	346731	Castor	54.3	22.2
	346732	Papyrus	536	21.6
	346733	Bullrush	50.8	19.1
	346734	Spun Gold	59.0	27.0
	346735	Dandelion	62.4	30.9
	346736	Meadow	50.3	18.7
	346737	Yew	33.9	8.0

\* **Light Value:** L Value = L according to CIE L\*a\*b\* colour space, Y Value = Light Reflectance Value according to BS 8493

**Lichtreflexionswerte:** L-Wert = L gemäß CIE L\*a\*b\* Farbspektrum, Y-Wert = Lichtreflexionswert gemäß British Standard BS 8493

**Valores de Reflectancia de Luz:** Valor L= L según CIE L\*a\*b\* espacio de color, Valor Y = Valor de reflectancia de luz según el estándar británico BS 8493

**Valeurs concernant la lumière:** Valeur L = L faisant référence à la méthode CIE L\*a\*b\* pour la couleur, Valeur Y = Valeurs de réflectance de la lumière selon le British Standard BS 8493

**Licht waarden:** L Waarde = L volgens CIE L\*a\*b\*kleurruimte, Y Waarde = Licht Reflectie Waarde volgens BS 8493

**Indici di riflettanza alla luce:** Indice L= L secondo CIE L\*a\*b\* colour space, Indice Y= Indice di riflettanza alla luce secondo la norma BS 8493

# Environmental Data Sheet

Construction			
Yarn system	100% BCF Solution Dyed PA 6		
Backing system	Graphlex®		
Recycled Content	Total Recycled Content	Pre consumer	Post consumer
Product average	<b>56,54%</b>	48,14%	8,40%
Yarn	<b>100,00 %</b>	50,00%	50,00%
Recycled content is the same for all colourways.			
Carbon Footprint			
Global Warming Potential (kgs CO2 equivalents/sq meter)			
Full life-cycle carbon footprint (following our EPD results or EPD calculation method)	Raw materials and Production:	7.78 kg CO2 eq./m2	
	Delivery and installation:	0.70 kg CO2 eq./m2	
	Use (1 year):	2.92 kg CO2 eq./m2	
	End of life (waste to energy):	8.57 kg CO2 eq./m2	
TOTAL (10 years' lifetime):		19.97 kg CO2 eq./m2	
CO <sub>2</sub> compensation	Carbon neutral Cool Carpet® is optional		
Manufacturing			
Location	Scherpenzeel, NL Factory is certified ISO 14001 since 1996 and ISO 9001 since 1990		
Installation Impacts			
TacTiles™	Optimised for glue-free installation with TacTiles™ connectors with virtually zero VOCs		
Installation Waste	In a typical installation* using the installation method below:		
	Monolithic - 3-4% installation waste		
	For reference: 2 metre wide broadloom typically generates 7-10 % installation waste		
* In a rectangular building, installed before walls.			
End-of-life			
Alternatives to landfill	Reuse: Can be cleaned and reused in a non-critical location to extend its useful life		
	Recycling: Can be returned through the Interface ReEntry scheme and be re-used as raw material in new carpet tiles		
	Waste-to-Energy: Can be incinerated in appropriate waste to energy plant		
Indoor Air Quality			
GUT (Gemeinschaft umweltfreundlicher Teppichboden)	The product passes all requirements of GUT's testing criteria regarding hazardous substances, emissions and odour. GUT PRODIS Certificate no. 54AA6565		
CRI (Carpet & Rug Institute)	Compliant to LEED IQ 4.3 credit (tested in Eurofins to the equivalent test of the CRI Green Label Plus)		
Compliance to Green Building Schemes			
See next page to check how our products contribute to the main green building certification schemes (BREEAM, LEED, HQE and DGNB)			
Type III Environmental Product Declaration			
EPD according to ISO 14025	This product has a type III generic Environmental Product Declaration, <a href="#">EPD-IFF-20120019-CBD1-EN</a>		

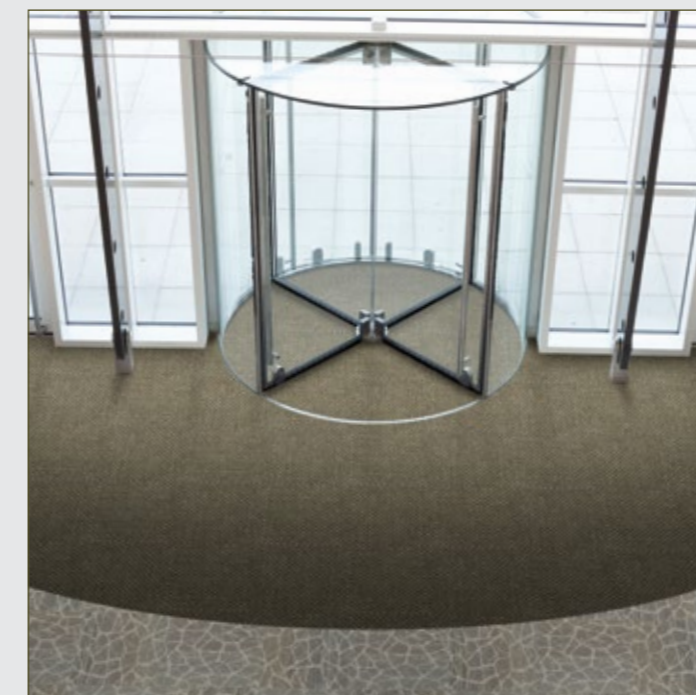
Recycled content – colour level						
Colourway	Total recycled content	Pre consumer recycled content	Post consumer recycled content	Yarn recycled content	Yarn Pre consumer recycled content	Yarn Post consumer recycled content
346690 Millstone	56,54%	48,14%	8,40%	100,00%	50,00%	50,00%
346691 Platinum	56,54%	48,14%	8,40%	100,00%	50,00%	50,00%
346692 Titanium	56,54%	48,14%	8,40%	100,00%	50,00%	50,00%
346693 Felt	56,54%	48,14%	8,40%	100,00%	50,00%	50,00%
346694 Storm	56,54%	48,14%	8,40%	100,00%	50,00%	50,00%
346695 Seal	56,54%	48,14%	8,40%	100,00%	50,00%	50,00%
346696 Carbon	56,54%	48,14%	8,40%	100,00%	50,00%	50,00%
346697 Black	56,54%	48,14%	8,40%	100,00%	50,00%	50,00%
346698 Silver	56,54%	48,14%	8,40%	100,00%	50,00%	50,00%
346699 Surf	56,54%	48,14%	8,40%	100,00%	50,00%	50,00%
346700 Jade	56,54%	48,14%	8,40%	100,00%	50,00%	50,00%
346701 Jungle	56,54%	48,14%	8,40%	100,00%	50,00%	50,00%
346702 Mercury	56,54%	48,14%	8,40%	100,00%	50,00%	50,00%
346703 Flemish Blue	56,54%	48,14%	8,40%	100,00%	50,00%	50,00%
346704 Pacific	56,54%	48,14%	8,40%	100,00%	50,00%	50,00%
346705 Peacock	56,54%	48,14%	8,40%	100,00%	50,00%	50,00%
346706 Lupin	56,54%	48,14%	8,40%	100,00%	50,00%	50,00%
346707 Flag Blue	56,54%	48,14%	8,40%	100,00%	50,00%	50,00%
346708 Lobelia	56,54%	48,14%	8,40%	100,00%	50,00%	50,00%
346709 Night Shadow	56,54%	48,14%	8,40%	100,00%	50,00%	50,00%
346710 Blue	56,54%	48,14%	8,40%	100,00%	50,00%	50,00%
346711 Iris	56,54%	48,14%	8,40%	100,00%	50,00%	50,00%
346712 Danube	56,54%	48,14%	8,40%	100,00%	50,00%	50,00%
346713 Elderberry	56,54%	48,14%	8,40%	100,00%	50,00%	50,00%
346714 Very Berry	56,54%	48,14%	8,40%	100,00%	50,00%	50,00%
346715 Lilac Haze	56,54%	48,14%	8,40%	100,00%	50,00%	50,00%
346716 Redwood	56,54%	48,14%	8,40%	100,00%	50,00%	50,00%
346717 Damson	56,54%	48,14%	8,40%	100,00%	50,00%	50,00%
346718 Orange	56,54%	48,14%	8,40%	100,00%	50,00%	50,00%
346719 Gerbera	56,54%	48,14%	8,40%	100,00%	50,00%	50,00%
346720 Terra Firma	56,54%	48,14%	8,40%	100,00%	50,00%	50,00%
346721 Wine Berry	56,54%	48,14%	8,40%	100,00%	50,00%	50,00%
346722 Malt	56,54%	48,14%	8,40%	100,00%	50,00%	50,00%
346723 Putty	56,54%	48,14%	8,40%	100,00%	50,00%	50,00%
346724 Rhino	56,54%	48,14%	8,40%	100,00%	50,00%	50,00%
346725 Coffee Bean	56,54%	48,14%	8,40%	100,00%	50,00%	50,00%
346726 Cream	56,54%	48,14%	8,40%	100,00%	50,00%	50,00%
346727 Caraway	56,54%	48,14%	8,40%	100,00%	50,00%	50,00%
346728 Briar	56,54%	48,14%	8,40%	100,00%	50,00%	50,00%
346729 Havana	56,54%	48,14%	8,40%	100,00%	50,00%	50,00%
346730 Barley	56,54%	48,14%	8,40%	100,00%	50,00%	50,00%
346731 Castor	56,54%	48,14%	8,40%	100,00%	50,00%	50,00%
346732 Papyrus	56,54%	48,14%	8,40%	100,00%	50,00%	50,00%
346733 Bullrush	56,54%	48,14%	8,40%	100,00%	50,00%	50,00%
346734 Spun Gold	56,54%	48,14%	8,40%	100,00%	50,00%	50,00%
346735 Dandelion	56,54%	48,14%	8,40%	100,00%	50,00%	50,00%
346736 Meadow	56,54%	48,14%	8,40%	100,00%	50,00%	50,00%
346737 Yew	56,54%	48,14%	8,40%	100,00%	50,00%	50,00%

Green Building Schemes	
BREEAM (UK and international)	<p>BRE Green Guide Ratings:                      Office - Not Available                      Education - Not Available                      Health Care - Not Available                      Retail (by fashion) - Not Available</p> <p>Potential contribution to following categories and credits:                      Hea 02 - Indoor air quality – minimising sources of air pollution                      Hea 05 - Acoustic Performance                      Mat 01 - Life Cycle Impacts                      Mat 05 - Designing for robustness                      Wst 01 - Construction Waste Management</p>
LEED 2009 US	<p>Potential direct or indirect contribution to following categories and credits:                      Indoor Environmental Quality                      Credit 4.1 Low Emitting Materials: Adhesive &amp; Sealants                      Credit 4.3 Low Emitting Materials: Carpet Systems                      Materials and Resources                      Credit 2.1 Construction Waste Management                      Credit 4.1 Recycled content                      Credit 5.1 Regional Materials                      Innovation and Design                      Credits 1-4 1 Pilot Credit 43, Certified Products</p>
HQE (FR)	<p>Potential direct or indirect contribution to several points within following targets:                      2. Integrated choice of products and construction materials                      3. Low site nuisance                      9. Acoustic comfort                      10. Visual comfort                      11. No unpleasant smells                      12. Sanitary quality of areas                      13. Sanitary air quality</p>
DGNB (D)	<p>Potential direct or indirect contribution to following criterion                      ENVIRONMENTAL QUALITY                      ENV1.2 Local Environmental Impact                      ECONOMIC QUALITY                      ECO1.1 Building-Related Lifecycle Costs                      ECO2.1 Efficient Use of Space                      SOCIOCULTURAL AND FUNCTIONAL QUALITY                      SOC1.2 Indoor Air Quality                      SOC1.3 Acoustic Comfort                      TECHNICAL QUALITY                      TEC1.5 Ease of Cleaning and Maintenance                      TEC1.6 Ease of Dismantling and Recycling</p>



## TacTiles™

- A smarter, more sustainable way to install carpet tiles
- No need for liquid adhesives
- Fitting tiles is quick, clean and easy and the process virtually eliminates emissions
- No damage to sub floors, and nothing to stop you lifting or moving the carpet whenever you want



## Entrance Matting

Incredibly tough, hard-wearing and practical; indoor entrance matting acts as the first line of defence to any interior by removing almost 100% of dirt, rain and mud before it's walked into your flooring.

Both of the products in our commercial entrance matting range – Barricade and Foyer – are resilient, functional, easy to maintain and stylish. And it's for these reasons that our barrier matting forms an essential part of any maintenance programme needed to keep your floorcovering looking its very best.