

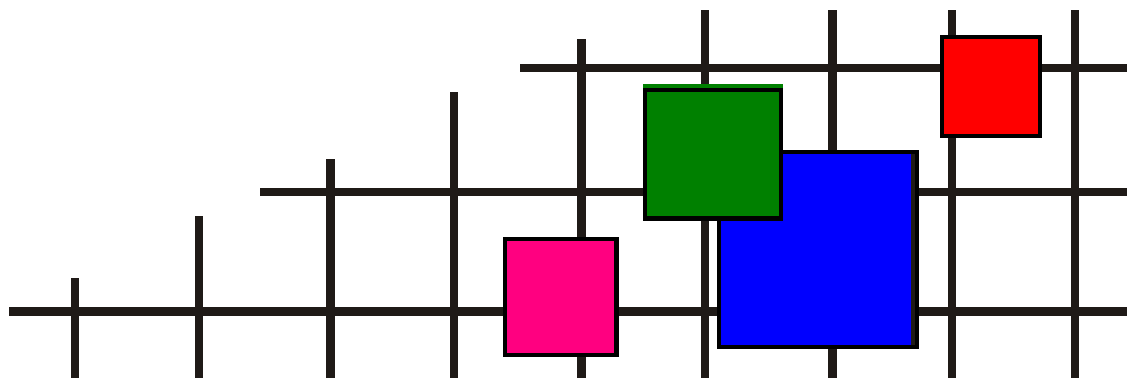
ковровая плитка • ковровые покрытия • ковры и ковровые дорожки • гобеленовые настенные ковры
безопасный пол • грязезащита • аксессуары для лестниц и пола • системы светодиодной подсветки
низкопрофильная система кабельной проводки • сопутствующие товары

СОВРЕМЕННЫЕ НАПОЛЬНЫЕ ПОКРЫТИЯ (ООО «СНП»)

Телефон +7 (495) 916-94-83

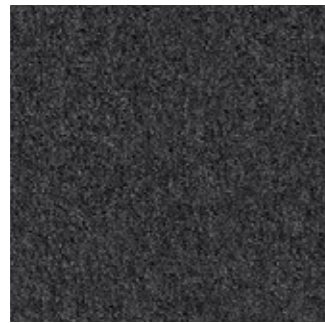
E-mail info@s-n-p.ru

Сайт <http://www.s-n-p.ru>



СЕРВИС ВЫСОКОГО КАЧЕСТВА!

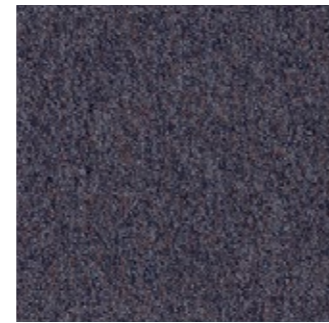
Heugra 493



9301 Lava



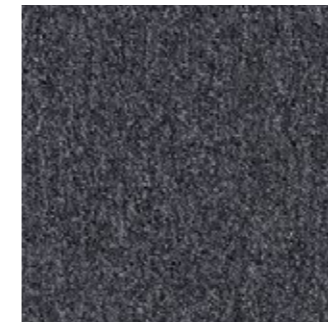
9302 Tamarind



9303 Orchid



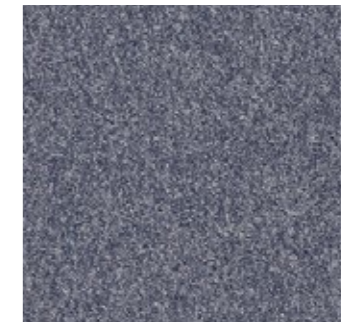
9304 Glacier



9305 Basalt



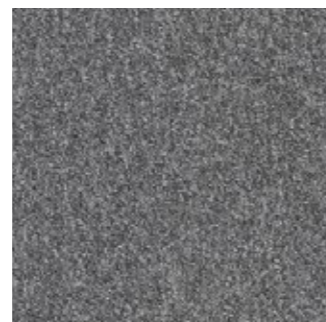
9306 Teak



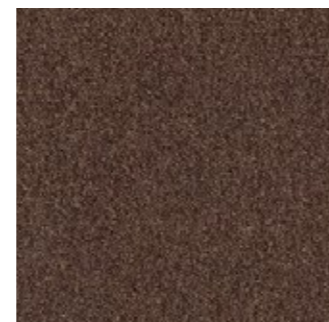
9307 Lavender



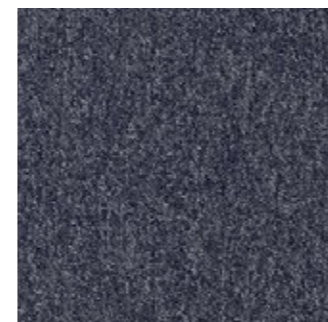
9308 Deep Sea



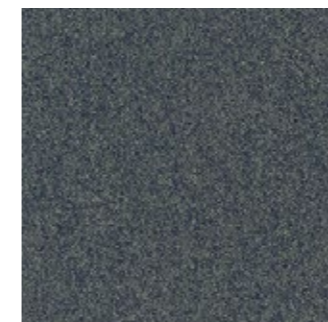
9309 Lead



9310 Auburn



9311 Parade



9312 Peppermint



9313 Mercury



9314 Gravel



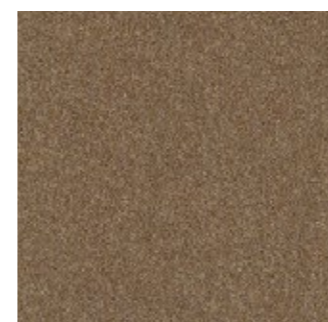
9315 Bluebeard



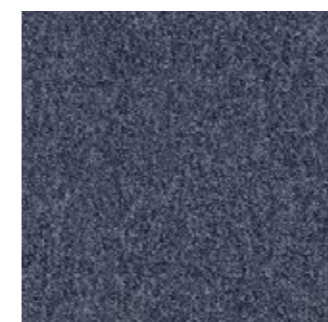
9316 Rainforest



9317 Seashell



9318 Brass



9319 True Blue



9320 Basil



Heuga 193



9309 Lead

Installed: Monolithic

Technical Specifications

Product Definition	Tufted Plain Level Loop Tile
Konstruktion	Getuftete Schlingenqualität
Descripción	Moqueta modular tufting bucle
Description	Dalle de moquette à velours tufté bouclé
Type	Getufte bouclé
Descrizione	Bouclé tufted piano

Pile Material	100% Polypropylene
Polfasermaterial	100% Polypropylen
Composición Fibra	100% Polipropileno
Composition	100% Polypropylène
Poolmateriaal	100% Polypropyleen
Fibra	100% Polipropilene
Pile Yarn Weight / Poleinsatzgewicht / Peso Fibra / Poids de fibre / Poolinzetgewicht / Peso Felpa	545g/m ² ± 5%
Total Weight / Gesamtgewicht / Peso Total Poids total / Totaalgewicht / Peso Totale	4200g/m ² ± 5%
Pile Height / Polschichtdicke / Altura Fibra / Hauteur de la fibre / Poolhoogte / Altezza Felpa	2,8 mm ± 0,3 mm
Total Thickness / Gesamtdicke / Espesor Total / Epaisseur totale / Totale dikte / Altezza Totale	6,2 mm ± 0,3 mm
Gauge/Ends 10 cm / Teilung x 10 cm / Galga x 10 cm / Jauge-Rangs par 10 cm / Rijen per 10 cm / Serraggio x 10 cm	39,4
Tufts per m² / Noppenzahl/m ² / Puntadas m ² / Densité du tuft par m ² / Aantal noppen per m ² / Densità Punti	168,100 ± 5%
Backing Type / Rückenkonstruktion / Soporte / Sous-couche / Rugitvoering / Sottofondo	Graphlar®
Wear Classification / Beanspruchungsklasse / Clasificación al tráfico / Classement Gebruiksintensiteit / Resistenza all'usura	Moderate Contract (EN 1307:31) Class 31 / LC1

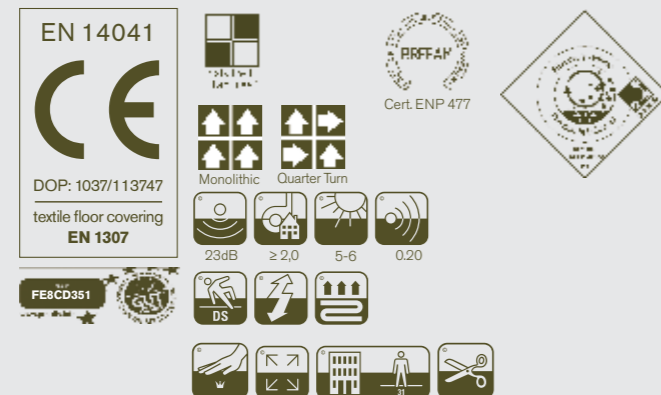
Style 60493
5m² - 20 tiles per box (50 x 50 cm ± 0,2%)

Radiant Panel / Schwerentflammbarkeit (EN ISO 9239/1)
Hot Metal Nut Euroclass Cfl s1 (EN ISO 13501)
Pass, low radius of effects of ignition (BS 4790)

Dimensional Stability / Dimensionsstabilität ≤ 0,2% (ISO 2551 / EN 986)
Estabilidad Dimensional / Stabilité dimensionnelle
Dimensionele stabiliteit / Test Stabilità dimensionale

Sound Absorption

125Hz	250Hz	500Hz	1000Hz	2000Hz	4000Hz
0.01	0.02	0.06	0.14	0.19	0.21



Light Values

Product	Colour No	Colour Name	L Value*	Y Value*
Heuga 493	9301	Lava	29.0	5.8
	9302	Tamarind	32.9	7.5
	9303	Orchid	32.5	7.3
	9304	Glacier	43.2	13.3
	9305	Basalt	33.8	7.9
	9306	Teak	43.4	13.4
	9307	Lavender	43.5	13.5
	9308	Deep Sea	33.4	7.7
	9309	Lead	45.6	14.9
	9310	Auburn	33.6	7.8
	9311	Parade	34.0	8.0
	9312	Peppermint	36.0	9.0
	9313	Mercury	48.0	16.8
	9314	Gravel	33.1	7.6
	9315	Bluebeard	33.2	7.6
	9316	Rainforest	32.4	7.2
	9317	Seashell	44.7	14.3
	9318	Brass	46.8	15.9
	9319	True Blue	34.3	8.1
	9320	Basil	41.4	12.1

* **Light Value:** L Value = L according to CIE L*a*b* colour space, Y Value = Light Reflectance Value according to BS 8493
Lichtreflexionswerte: L-Wert = L gemäß CIE L*a*b* Farbspektrum, Y-Wert = Lichtreflexionswert gemäß British Standard BS 8493
Valores de Reflectancia de Luz: Valor L = L según CIE L*a*b* espacio de color, Valor Y = Valor de reflectancia de luz según el estándar británico BS 8493
Valeurs concernant la lumière: Valeur L = L faisant référence à la méthode CIE L*a*b* pour la couleur, Valeur Y = Valeurs de réflectance de la lumière selon le British Standard BS 8493
Licht waarden: L Waarde = L volgens CIE L*a*b*kleurruimte, Y Waarde = Licht Reflectie Waarde volgens BS 8493
Indici di riflettanza alla luce: Indice L = L secondo CIE L*a*b* colour space, Indice Y = Indice di riflettanza alla luce secondo la norma BS 8493

Environmental Data Sheet

Construction			
Yarn system	100% Polypropylene		
Backing system	Graphlar®		
Recycled Content	Total Recycled Content	Pre consumer	Post consumer
Product average	61,70%	61,70%	0,00%
Yarn	0,00%	0,00%	0,00%
Recycled content can be subject to differences between colours. See details for individual colours on next page.			
Carbon Footprint			
Global Warming Potential (kgs CO ₂ equivalents/sq meter)			
Full life-cycle carbon footprint (following our EPD results or EPD calculation method)	Raw materials and Production:	4.8 kg CO ₂ eq./m ²	
	Delivery and installation:	0.31 kg CO ₂ eq./m ²	
	Use (10 years):	2 kg CO ₂ eq./m ²	
	End of life (waste to energy):	4.5 kg CO ₂ eq./m ²	
	TOTAL (10 years' lifetime):	11.61 kg CO ₂ eq./m ²	
CO ₂ compensation	Carbon neutral Cool Carpet® is optional		
Manufacturing			
Location	Scherpenzeel, NL		
	Factory is certified ISO 14001 since 1996 and ISO 9001 since 1990		
Installation Impacts			
TacTiles™	Optimised for glue-free installation with TacTiles™ connectors with virtually zero VOCs		
Installation Waste	In a typical installation* using the installation method below:		
	Quarter turn – 3-4% installation waste		
	Monolithic - 3-4% installation waste		
	For reference: 2 metre wide broadloom typically generates 7-10 % installation waste		
	* In a rectangular building, installed before walls.		
End-of-life			
Alternatives to landfill	Reuse: Can be cleaned and reused in a non-critical location to extend its useful life		
	Recycling: Can be returned through the Interface ReEntry scheme and be re-used as raw material in new carpet tiles		
	Waste-to-Energy: Can be incinerated in appropriate waste to energy plant		
Indoor Air Quality			
GUT (Gemeinschaft umweltfreundlicher Teppichboden)	The product passes all requirements of GuT's testing criteria regarding hazardous substances, emissions and odour. GUT PRODIS Certificate no. FE8CD351		
CRI (Carpet & Rug Institute)	Compliant to the requirements of the Green Label Plus programme.		
Compliance to Green Building Schemes			
	See next page to check how our products contribute to the main green building certification schemes (BREEAM, LEED, HQE and DGNB)		
Type III Environmental Product Declaration			
EPD according to ISO 14025	This product has a type III Environmental Product Declaration, EPD-IFF-2011411-E		

Recycled content – colour level						
Colourway	Total recycled content	Pre consumer recycled content	Post consumer recycled content	Yarn recycled content	Yarn pre consumer recycled content	Yarn post consumer recycled content
9301 Lava	61,70%	61,70%	0,00%	0,00%	0,00%	0,00%
9302 Tamarind	61,70%	61,70%	0,00%	0,00%	0,00%	0,00%
9303 Orchid	61,70%	61,70%	0,00%	0,00%	0,00%	0,00%
9304 Glacier	61,70%	61,70%	0,00%	0,00%	0,00%	0,00%
9305 Basalt	61,70%	61,70%	0,00%	0,00%	0,00%	0,00%
9306 Teak	61,70%	61,70%	0,00%	0,00%	0,00%	0,00%
9307 Lavender	61,70%	61,70%	0,00%	0,00%	0,00%	0,00%
9308 Deepsea	61,70%	61,70%	0,00%	0,00%	0,00%	0,00%
9309 Lead	61,70%	61,70%	0,00%	0,00%	0,00%	0,00%
9310 Auburn	61,70%	61,70%	0,00%	0,00%	0,00%	0,00%
9311 Parade	61,70%	61,70%	0,00%	0,00%	0,00%	0,00%
9312 Peppermint	61,70%	61,70%	0,00%	0,00%	0,00%	0,00%
9313 Mercury	61,70%	61,70%	0,00%	0,00%	0,00%	0,00%
9314 Gravel	61,70%	61,70%	0,00%	0,00%	0,00%	0,00%
9315 Bluebeard	61,70%	61,70%	0,00%	0,00%	0,00%	0,00%
9316 Rainforest	61,70%	61,70%	0,00%	0,00%	0,00%	0,00%
9317 Seashell	61,70%	61,70%	0,00%	0,00%	0,00%	0,00%
9318 Brass	61,70%	61,70%	0,00%	0,00%	0,00%	0,00%
9319 True Blue	61,70%	61,70%	0,00%	0,00%	0,00%	0,00%
9320 Basil	61,70%	61,70%	0,00%	0,00%	0,00%	0,00%

Compliance to Green Building Schemes	
BREEAM (UK and international)	BRE Green Guide Ratings: Office - A rated Education - A+ rated Health Care - A+ rated Retail (by fashion) - A+ rated Potential contribution to following categories and credits: Hea 02 - Indoor air quality – minimising sources of air pollution Hea 05 - Acoustic Performance Mat 01 - Life Cycle Impacts Mat 05 - Designing for robustness Wst 01 - Construction Waste Management
LEED 2009 US	Potential direct or indirect contribution to following categories and credits: Indoor Environmental Quality Credit 4.1 Low Emitting Materials: Adhesive & Sealants Credit 4.3 Low Emitting Materials: Carpet Systems Materials and Resources Credit 2.1 Construction Waste Management Credit 4.1 Recycled content Credit 5.1 Regional Materials Innovation and Design Credits 1-4 1 Pilot Credit 43, Certified Products
HQE (FR)	Potential direct or indirect contribution to several points within following targets: 2. Integrated choice of products and construction materials 3. Low site nuisance 9. Acoustic comfort 10. Visual comfort 11. No unpleasant smells 12. Sanitary quality of areas 13. Sanitary air quality
DGNB (D)	Potential direct or indirect contribution to following criterion ENVIRONMENTAL QUALITY ENV1.2 Local Environmental Impact ECONOMIC QUALITY ECO1.1 Building-Related Lifecycle Costs ECO2.1 Efficient Use of Space SOCIOCULTURAL AND FUNCTIONAL QUALITY SOC1.2 Indoor Air Quality SOC1.3 Acoustic Comfort TECHNICAL QUALITY TEC1.5 Ease of Cleaning and Maintenance TEC1.6 Ease of Dismantling and Recycling



TacTiles™

- A smarter, more sustainable way to install carpet tiles
- No need for liquid adhesives
- Fitting tiles is quick, clean and easy and the process virtually eliminates emissions
- No damage to sub floors, and nothing to stop you lifting or moving the carpet whenever you want



Entrance Matting

Incredibly tough, hard-wearing and practical; indoor entrance matting acts as the first line of defence to any interior by removing almost 100% of dirt, rain and mud before it's walked into your flooring.

Both of the products in our commercial entrance matting range – Barricade and Foyer – are resilient, functional, easy to maintain and stylish. And it's for these reasons that our barrier matting forms an essential part of any maintenance programme needed to keep your floorcovering looking its very best.