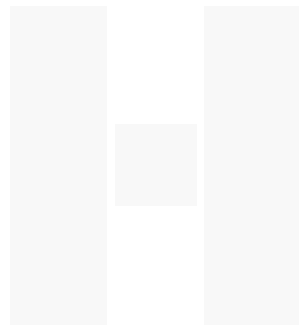


Heavy Contract Carpet and Tiles



**Heckmondwike**  
Quality in every fibre



**TC**  
Total Care  
Care Range



Bergamot



Cinnamon



Iris



Juniper



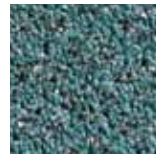
Lavender



Nettle



Paprika



Peppermint

## Heckmondwike Total Care

Care Range

A heavy contract tufted carpet, Total Care is ideally suited to care environments, student accommodation and medical centres. With full impervious backing and high resistance to staining, it passes the Health Care Supply Council test for impermeability and comes in 4 metre widths. Available in ten attractive colours, this carpet will look great from the moment it is installed and for many years to come.



Specification	Total Care
Fibre Construction	1/8" Crossover cut pile tufted 100% Solution dyed Polypropylene
Colour Fastness	Light (BS EN ISO 105:B02) >6 Wet Rubbing (BS EN ISO 105:B01) 4-5 Dry Rubbing (BS EN ISO 105:X12) 5 Bleach (Camraso) 5
Flammability	BS5287 Assessment and labelling of Textile Floorcoverings tested to BS4790 (Hot Metal Nut Test) - Low Radius of Char
Electrostatic Propensity	(Walking Test) BS ISO 6356:2000: Less than 2.0kv at 25% RH
Impermeability	(Health Care Supply Council Test): Pass
Formats	Sheet 
Backing	Aqua-Bac Impervious
Size	4 metre
Weight	3100gm metre <sup>2</sup>
Thickness	10mm



Saffron



Tarragon



BESA



Manufactured in the UK

E & OE

Heckmondwike FB reserves the right to change or modify product specifications without giving prior notice. Colours are limited to the print process and may differ slightly to the actual product.

05/2012

 **Heckmondwike**  
Quality in every fibre

Heckmondwike FB, A division of  
National Floorcoverings Ltd.  
Wellington Mills, Liversedge,  
West Yorkshire WF15 7FH

**Sales:** 01924 406161 - Admin: 01924 410544

**Free Fax:** 0800 136769

**sales@heckmondwike-fb.co.uk**

**www.heckmondwike-fb.co.uk**