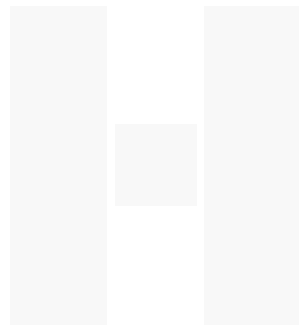


Heavy Contract Carpet and Tiles



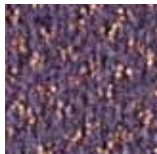
Heckmondwike
Quality in every fibre



PC
Pure Care
Care Range



Amber



Amethyst



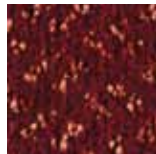
Aquamarine



Cobalt



Emerald



Garnet



Opal



Pearl

Heckmondwike Pure Care

Care Range

A beautiful carpet that looks at home in a number of care environments and offers high stain resistance. Available in 4 metre widths, it is fully impervious backed and bleach resistant, making it ideal for care environments, sheltered accommodation and nursing homes.



Sapphire



Topaz

Specification	Pure Care
Fibre Construction	1/8" Crossover cut pile tufted 100% Solution dyed Polypropylene
Colour Fastness	Light (BS EN ISO 105:B02) 6 Wet Rubbing (BS EN ISO 105:B01) 5 Dry Rubbing (BS EN ISO 105:X12) 4-5 Bleach (Camraso) 4-5
Flammability	BS5287 Assessment and labelling of Textile Floorcoverings tested to BS4790 (Hot Metal Nut Test) - Low Radius of Char
Electrostatic Propensity	(Walking Test) BS ISO 6356:2000: Less than 2.0kv at 25% RH
Impermeability	(Health Care Supply Council Test): Pass
Formats	Sheet 
Backing	Aqua-Bac Impervious
Size	4 metre
Weight	2700gm metre ²
Thickness	9mm



BESA



Manufactured in the UK

E & OE

Heckmondwike FB reserves the right to change or modify product specifications without giving prior notice. Colours are limited to the print process and may differ slightly to the actual product.

05/2012

 **Heckmondwike**
Quality in every fibre

Heckmondwike FB, A division of
National Floorcoverings Ltd.
Wellington Mills, Liversedge,
West Yorkshire WF15 7FH

Sales: 01924 406161 - Admin: 01924 410544

Free Fax: 0800 136769

sales@heckmondwike-fb.co.uk

www.heckmondwike-fb.co.uk