

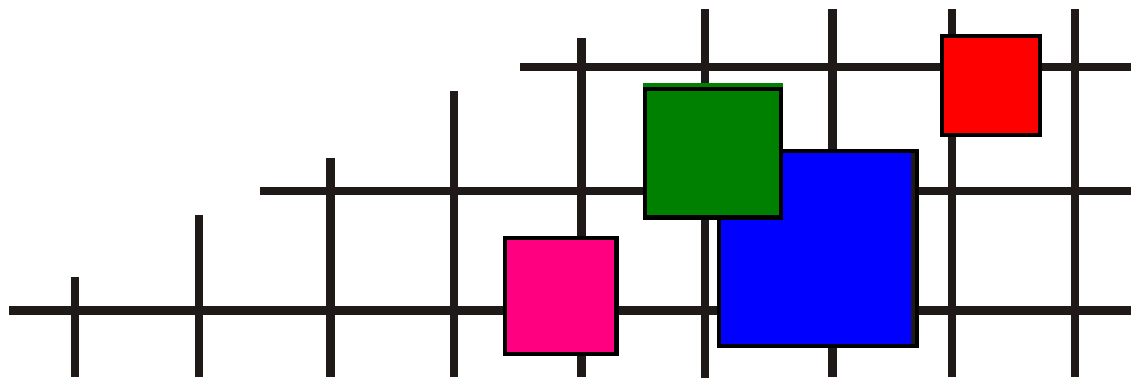
ковровая плитка • ковровые покрытия • ковры и ковровые дорожки • гобеленовые настенные ковры  
безопасный пол • грязезащита • аксессуары для лестниц и пола • системы светодиодной подсветки  
низкопрофильная система кабельной проводки • сопутствующие товары

# СОВРЕМЕННЫЕ НАПОЛЬНЫЕ ПОКРЫТИЯ (ООО «СНП»)

**Телефон** +7 (495) 916-94-83

**E-mail** [info@s-n-p.ru](mailto:info@s-n-p.ru)

**Сайт** <http://www.s-n-p.ru>



СЕРВИС ВЫСОКОГО КАЧЕСТВА!

Foyer

Interface®



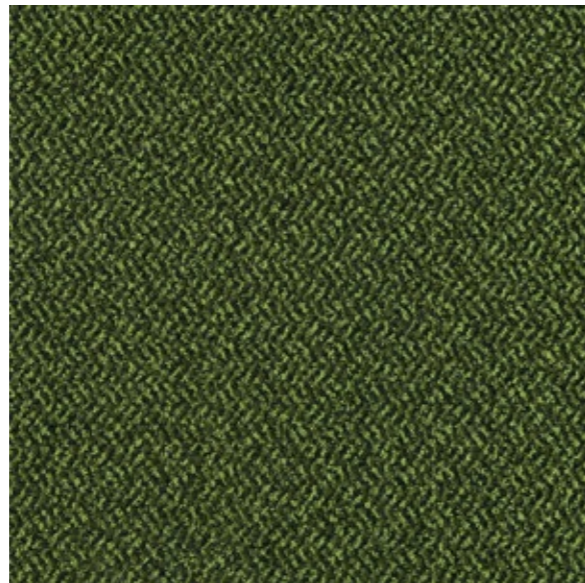
357201 Ulysses



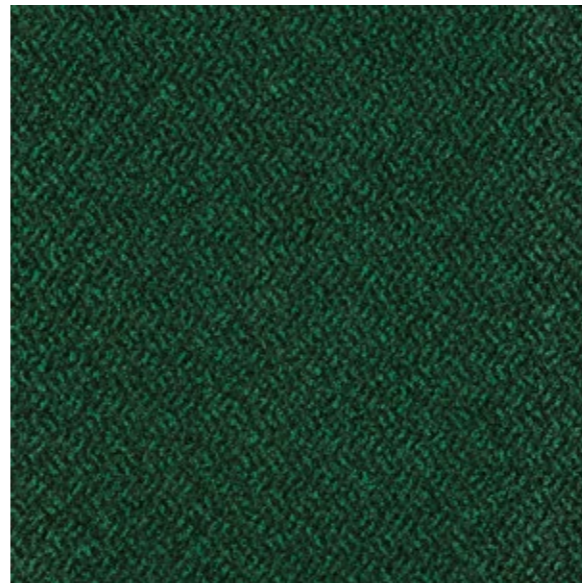
357203 Homer



357213 Hades



357214 Athena



357215 Calypso



357214 Athena (Shown with Scribble)

Installed: Monolithic



357213 Hades (Shown with Cellular)

Installed: Quarter Turn

<b>Product Definition</b>	Tufted Patterned Textured Cut Tile
Konstruktion	Tuftgemusterte texturierte Veloursqualität
Descripción	Moqueta modular tufting pelo cortado con diseño tipo barrera antisuciedad
Description	Dalle de moquette à velours tufté coupé texturé à motifs
Type	Getufte vuilvangtegel
Descrizione	Velluto tufted strutturato

<b>Pile Material</b>	80% Wool, 20% Nylon & Monofilament Scraper
Polfasematerial	80% Wolle, 20% Polyamid & Monofilament Scraper
Composición Fibra	80% Lana, 20% Poliamida + monofilamento
Composition	80% Laine, 20% Polyamide et monofil racloir
Poolmateriaal	80% Wol, 20% Polyamide en Monofil Polyamide scraper
Fibra	80% lana, 20% Poliammide e monofilo raschiato

<b>Pile Yarn Weight</b> / Poleinsatzgewicht / Peso Fibra / Poids de fibre / Poolinzetgewicht / Peso Felpa	1500g/m <sup>2</sup> ± 5%
<b>Total Weight</b> / Gesamtgewicht / Peso Total Poids total / Totaalgewicht / Peso Totale	5639g/m <sup>2</sup> ± 5%
<b>Pile Height</b> / Polschichtdicke / Altura Fibra / Hauteur de la fibre / Poolhoogte / Altezza Felpa	6,7 mm ± 0,3 mm
<b>Total Thickness</b> / Gesamtdicke / Espesor Total / Epaisseur totale / Totale dikte / Altezza Totale	11,2 mm ± 0,5mm
<b>Gauge/Ends 10 cm</b> / Teilung x 10 cm / Galga x 10 cm / Jauge-Rangs par 10 cm / Rijen per 10 cm / Serraggio x 10 cm	1/8 - 31,5
<b>Tufts per m<sup>2</sup></b> / Noppenzahl/m <sup>2</sup> / Puntadas m <sup>2</sup> / Densité du tuft par m <sup>2</sup> / Aantal noppen per m <sup>2</sup> / Densità Punti	113,400 ± 5%
<b>Backing Type</b> / Rückenkonstruktion / Soporte / Sous-couche / Ruguitvoering / Sottofondo	Graphlex®
<b>Wear Classification</b> / Beanspruchungsklasse / Clasificación al tráfico / Classement Gebruiksintensiteit / Resistenza all'usura	Heavy Contract (EN 1307) Class 33

<b>Style</b>	30572
3m <sup>2</sup> - 12 tiles per box (50 x 50 cm ± 0,2%)	

<b>Radiant Panel</b> / Schwerentflammbarkeit / Hot Metal Nut	(EN ISO 9239/1) Euroclass Bfl s1 (EN ISO 13501) Pass, low radius of effects of ignition (BS 4790)
--	---

<b>Dimensional Stability</b> / Dimensionsstabilität / Estabilidad Dimensional / Stabilité dimensionnelle / Dimensionele stabiliteit / Test Stabilità dimensionale	≤ 0,2% (ISO 2551)
---	-------------------

## Light Value

Product	Colour No	Colour Name	L Value*	Y Value*
<b>Foyer</b>	357201	Ulysses	2596	473
	357203	Homer	2366	400
	357213	Hades	2330	389
	357214	Athena	3091	661
	357215	Calypso	2478	434

\* **Light Value:** L Value = L according to CIE L\*a\*b\* colour space, Y Value = Light Reflectance Value according to BS 8493

**Lichtreflexionswerte:** L-Wert = L gemäß CIE L\*a\*b\* Farbspektrum, Y-Wert = Lichtreflexionswert gemäß British Standard BS 8493

**Valores de Reflectancia de Luz:** Valor L = L según CIE L\*a\*b\* espacio de color, Valor Y = Valor de reflectancia de luz según el estándar británico BS 8493

**Valeurs concernant la lumière:** Valeur L = L faisant référence à la méthode CIE L\*a\*b\* pour la couleur, Valeur Y = Valeurs de réflectance de la lumière selon le British Standard BS 8493

**Licht waarden:** L Waarde = L volgens CIE L\*a\*b\*kleurruimte, Y Waarde = Licht Reflectie Waarde volgens BS 8493

**Indici di riflettanza alla luce:** Indice L = L secondo CIE L\*a\*b\* colour space, Indice Y = Indice di riflettanza alla luce secondo la norma BS 8493



# Environmental Data Sheet

Construction			
Yarn system	80% Wool 20% PA 6,6 & Monofilament Scraper		
Backing system	Glaphlex®		
Recycled / Renewable Content	TOTAL	Pre-consumer	Post consumer
Product average	<b>33,04%</b>	33,04%	0,00%
Yarn Renewable content	<b>21,29%</b>	21,29%	0,00%
Recycled content can be subject to differences between colours. See details for individual colours on next page.			
Carbon Footprint			
Global Warming Potential (kgs CO2 equivalents/sq meter)			
Full life-cycle carbon footprint (following our EPD results or EPD calculation method)	Raw materials and Production:	10.3 kg CO <sub>2</sub> eq./m <sup>2</sup>	
	Delivery and installation:	0.6 kg CO <sub>2</sub> eq./m <sup>2</sup>	
	Use (10 years):	1 kg CO <sub>2</sub> eq./m <sup>2</sup>	
	End of life (waste to energy):	5.4 kg CO <sub>2</sub> eq./m <sup>2</sup>	
	TOTAL (10 years' lifetime):	17.7 kg CO <sub>2</sub> eq./m <sup>2</sup>	
CO <sub>2</sub> compensation	Carbon neutral Cool Carpet® is optional		
Manufacturing			
Location	Scherpenzeel, NL Factory is certified ISO 14001 since 1996 and ISO 9001 since 1990		
Installation Impacts			
TacTiles™	Optimised for glue-free installation with TacTiles™ connectors with virtually zero VOCs		
Installation Waste	In a typical installation* using the installation method below:		
	Quarter turn – 3-4% installation waste		
	Monolithic - 3-4% installation waste		
	For reference: 2 metre wide broadloom typically generates 7-10 % installation waste		
* In a rectangular building, installed before walls.			
End-of-life			
Alternatives to landfill	Reuse: Can be cleaned and reused in a non-critical location to extend its useful life		
	Recycling: Can be returned through the Interface ReEntry scheme and be re-used as raw material in new carpet tiles		
	Waste-to-Energy: Can be incinerated in appropriate waste to energy plant		
Indoor Air Quality			
GUT (Gemeinschaft umweltfreundlicher Teppichboden)	The product passes all requirements of GUT's testing criteria regarding hazardous substances, emissions and odour. GUT PRODIS Certificate no. 70A8CFDE		
CRI (Carpet & Rug Institute)	Compliant to LEED IQ 4.3 credit (tested in Eurofins to the equivalent test of the CRI Green Label Plus)		
Compliance to Green Building Schemes			
See next page to check how our products contribute to the main green building certification schemes (BREEAM, LEED, HQE and DGNB)			

Recycled content – colour level					
Colourway	Total Recycled content	Pre consumer recycled content	Post consumer recycled content	Yarn biobased content	Total biobased content
357201 Ulysses	33,04%	33,04%	0,00%	80.0%	21,29%
357203 Homer	33,04%	33,04%	0,00%	80.0%	21,29%
357213 Hades	33,04%	33,04%	0,00%	80.0%	21,29%
357214 Athena	33,04%	33,04%	0,00%	80.0%	21,29%
357215 Calypso	33,04%	33,04%	0,00%	80.0%	21,29%

Compliance to Green Building Schemes	
LEED 2009 US	Potential direct or indirect contribution to following categories and credits: Indoor Environmental Quality Credit 4.1 Low Emitting Materials: Adhesive & Sealants Credit 4.3 Low Emitting Materials: Carpet Systems Materials and Resources Credit 2.1 Construction Waste Management Credit 5.1 Regional Materials Credit 6 Rapidly Renewable Content



## TacTiles™

---

- A smarter, more sustainable way to install carpet tiles
- No need for liquid adhesives
- Fitting tiles is quick, clean and easy and the process virtually eliminates emissions
- No damage to sub floors, and nothing to stop you lifting or moving the carpet whenever you want



## Entrance Matting

---

Incredibly tough, hard-wearing and practical; indoor entrance matting acts as the first line of defence to any interior by removing almost 100% of dirt, rain and mud before it's walked into your flooring.

Both of the products in our commercial entrance matting range – Barricade and Foyer – are resilient, functional, easy to maintain and stylish. And it's for these reasons that our barrier matting forms an essential part of any maintenance programme needed to keep your floorcovering looking its very best.