

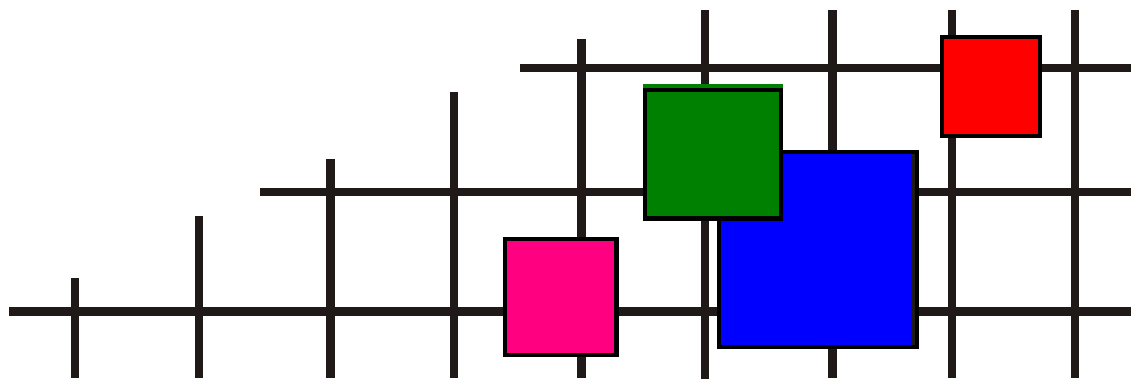
ковровая плитка • ковровые покрытия • ковры и ковровые дорожки • гобеленовые настенные ковры
безопасный пол • грязезащита • аксессуары для лестниц и пола • системы светодиодной подсветки
низкопрофильная система кабельной проводки • сопутствующие товары

СОВРЕМЕННЫЕ НАПОЛЬНЫЕ ПОКРЫТИЯ (ООО «СНП»)

Телефон +7 (495) 916-94-83

E-mail info@s-n-p.ru

Сайт <http://www.s-n-p.ru>



СЕРВИС ВЫСОКОГО КАЧЕСТВА!



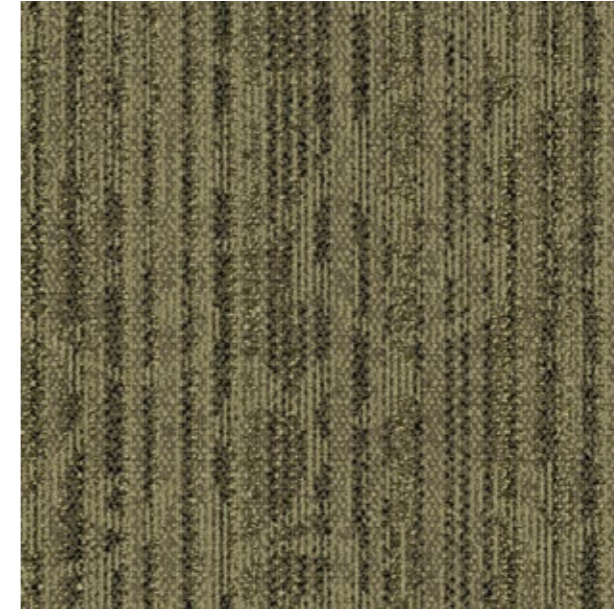
Assur - Seleucia



346621 Girsu



346622 Warka



346623 Endu



346624 Akkad



346625 Riblah



346626 Tema

Assur - Seleucia



346625 Riblah

Installed: Non Directional



346621 Girsu

Installed: Non Directional



346625 Riblah

Installed: Non Directional

Product Definition	Tufted Patterned Textured Loop Tile
Konstruktion	Tuftgemusterte texturierte Schlingenqualität
Descripción	Moqueta modular tufting bucle estructurado con diseño
Description	Dalle de moquette à velours tufté bouclé à motifs
Type	Getufte gedessineerde gestructureerde bouclé
Descrizione	Bouclé tufted strutturato

Pile Material	100% BCF Solution Dyed Nylon contains preconsumer recycled content
Polfasermaterial	100% Polyamid garngefärbt mit recyceltem Anteil (Prä-Konsumenten- Anteil)
Composición Fibra	100% Poliamida BCF tintada en masa con contenido reciclado preconsumo
Composition	100% Polyamide BCF Teint en masse contenant des éléments recyclés pré-consommation
Poolmateriaal	100% Solution Dyed Polyamide BCF, bevat preconsumer gerecycled content
Fibra	100% Poliammide BCF tinta in massa con contenuto riciclato preconsumer

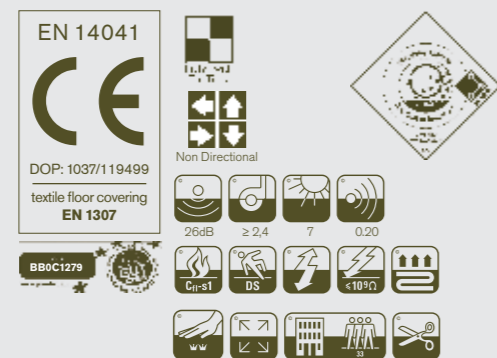
Pile Yarn Weight / Poleinsatzgewicht / Peso Fibra / Poids de fibre / Poolinzetgewicht / Peso Felpa	632g/m ² ± 5%
Total Weight / Gesamtgewicht / Peso Total Poids total / Totaalgewicht / Peso Totale	4609g/m ² ± 5%
Pile Height / Polschichtdicke / Altura Fibra / Hauteur de la fibre / Poolhoogte / Altezza Felpa	3,5 mm ± 0,3 mm
Total Thickness / Gesamtdicke / Espesor Total / Epaisseur totale / Totale dikte / Altezza Totale	7,5 mm ± 0,5 mm
Gauge/Ends 10 cm / Teilung x 10 cm / Galga x 10 cm / Jauge-Rangs par 10 cm / Rijen per 10 cm / Serraggio x 10 cm	1/12 – 47,2
Tufts per m² / Noppenzahl/m ² / Puntadas m ² / Densité du tuft par m ² / Aantal noppen per m ² / Densità Punti	184,080 ± 5%
Backing Type / Rückenkonstruktion / Soporte / Sous-couche / Rugitvoering / Sottofondo	Graphlex®
Wear Classification / Beanspruchungsklasse / Clasificación al tráfico / Classement Gebruiksintensiteit / Resistenza all'usura	Heavy Contract (EN 1307) Class 33 / LC2

Style	34662
4m ² - 16 tiles per box (50 x 50 cm ± 0,15%)	

Radiant Panel / Schwerentflammbarkeit	(EN ISO 9239/1) Euroclass Cfl s1 (EN ISO 13501)
Hot Metal Nut	Pass, low radius of effects of ignition (BS 4790)

Dimensional Stability / Dimensionsstabilität / Estabilidad Dimensional / Stabilité dimensionnelle / Dimensionele stabiliteit / Test Stabilità dimensionale	≤ 0,2% (ISO 2551/EN 986)
---	--------------------------

Sound Absorption					
125Hz	250Hz	500Hz	1000Hz	2000Hz	4000Hz
0.02	0.03	0.08	0.19	0.32	0.40



Light Value

Product	Colour No	Colour Name	L Value*	Y Value*
Assur - Seleucia	346621	Girsu	5284	21,99
	346622	Warka	463	15,49
	346623	Endu	4458	14,27
	346624	Akkad	3244	7,28
	346625	Riblah	3734	9,73
	346626	Tema	3021	6,32

* **Light Value:** L Value = L according to CIE L*a*b* colour space, Y Value = Light Reflectance Value according to BS 8493

Lichtreflexionswerte: L-Wert = L gemäß CIE L*a*b* Farbspektrum, Y-Wert = Lichtreflexionswert gemäß British Standard BS 8493

Valores de Reflectancia de Luz: Valor L= L según CIE L*a*b* espacio de color, Valor Y = Valor de reflectancia de luz según el estándar británico BS 8493

Valeurs concernant la lumière: Valeur L = L faisant référence à la méthode CIE L*a*b* pour la couleur, Valeur Y = Valeurs de réflectance de la lumière selon le British Standard BS 8493

Licht waarden: L Waarde = L volgens CIE L*a*b*kleurruimte, Y Waarde = Licht Reflectie Waarde volgens BS 8493

Indici di riflettanza alla luce: Indice L= L secondo CIE L*a*b* colour space, IndiceY= Indice di riflettanza alla luce secondo la norma BS 8493

Environmental Data Sheet

Construction			
Yarn system	100% BCF Solution Dyed PA 6,6		
Backing system	Graphlex®		
Recycled Content	Total Recycled Content	Pre consumer	Post consumer
Product average	50,68%	50,48%	0,20%
Yarn	19,63%	18,21%	1,42%
Recycled content can be subject to differences between colours. See details for individual colours on next page.			
Carbon Footprint			
Global Warming Potential (kgs CO2 equivalents/sq meter)			
Full life-cycle carbon footprint (following our EPD results or EPD calculation method)	Raw materials and Production:	9.4 kg CO ₂ eq./m ²	
	Delivery and installation:	0.32 kg CO ₂ eq./m ²	
	Use (10 years):	2 kg CO ₂ eq./m ²	
	End of life (waste to energy):	4.8 kg CO ₂ eq./m ²	
TOTAL (10 years' lifetime):		16.52 kg CO ₂ eq./m ²	
CO ₂ compensation	Carbon neutral Cool Carpet® is standard		
Manufacturing			
Location	Scherpenzeel, NL Factory is certified ISO 14001 since 1996 and ISO 9001 since 1990		
Installation Impacts			
TacTiles™	Optimised for glue-free installation with TacTiles™ connectors with virtually zero VOCs		
Installation Waste	In a typical installation* using the installation method below:		
	Non-directional – 1-2% installation waste		
	For reference: 2 metre wide broadloom typically generates 7-10 % installation waste		
* In a rectangular building, installed before walls.			
End-of-life			
Alternatives to landfill	Reuse: Can be cleaned and reused in a non-critical location to extend its useful life		
	Recycling: Can be returned through the Interface ReEntry scheme and be re-used as raw material in new carpet tiles		
	Waste-to-Energy: Can be incinerated in appropriate waste to energy plant		
Indoor Air Quality			
GUT (Gemeinschaft umweltfreundlicher Teppichboden)	The product passes all requirements of GUT's testing criteria regarding hazardous substances, emissions and odour. GUT PRODIS Certificate no. BB0C1279		
CRI (Carpet & Rug Institute)	Compliant to LEED IQ 4.3 credit (tested in Eurofins to the equivalent test of the CRI Green Label Plus)		
Compliance to Green Building Schemes			
See next page to check how our products contribute to the main green building certification schemes (BREEAM, LEED, HQE and DGNB)			
Type III Environmental Product Declaration			
EPD according to ISO 14025	This product has a type III Environmental Product Declaration, EPD-IFF-2011711-E		

Recycled content – colour level						
Colourway	Total recycled content	Pre-consumer recycled content	Post-consumer recycled content	Yarn recycled content	Pre-consumer yarn recycled content	Post-consumer yarn recycled content
346621 Girsu	49,92%	49,76%	0,17%	19,37%	18,17%	1,20%
346622 Warka	50,96%	50,96%	0,00%	20,61%	20,61%	0,00%
346623 Endu	50,97%	50,97%	0,00%	20,70%	20,70%	0,00%
346624 Akkad	51,12%	51,12%	0,00%	21,81%	21,81%	0,00%
346625 Riblah	50,18%	49,33%	0,85%	14,97%	8,87%	6,10%
346626 Tema	50,92%	50,75%	0,17%	20,33%	19,13%	1,20%
Compliance to Green Building Schemes						
BREEAM (UK and international)	BRE Green Guide Ratings: Office - Not available Education - Not available Health Care - Not available Retail (by fashion) - Not available Potential contribution to following categories and credits: Hea 02 - Indoor air quality – minimising sources of air pollution Hea 05 - Acoustic Performance Mat 01 - Life Cycle Impacts Mat 05 - Designing for robustness Wst 01 - Construction Waste Management					
LEED 2009 US	Potential direct or indirect contribution to following categories and credits: Indoor Environmental Quality Credit 4.1 Low Emitting Materials: Adhesive & Sealants Credit 4.3 Low Emitting Materials: Carpet Systems Materials and Resources Credit 2.1 Construction Waste Management Credit 4.1 Recycled content Credit 5.1 Regional Materials Innovation and Design Credits 1-4 1 Climate Neutral Products Credits 1-4 1 Pilot Credit 43, Certified Products					
HQE (FR)	Potential direct or indirect contribution to several points within following targets: 2. Integrated choice of products and construction materials 3. Low site nuisance 9. Acoustic comfort 10. Visual comfort 11. No unpleasant smells 12. Sanitary quality of areas 13. Sanitary air quality					
DGNB (D)	Potential direct or indirect contribution to following criterion ENVIRONMENTAL QUALITY ENV1.2 Local Environmental Impact ECONOMIC QUALITY ECO1.1 Building-Related Lifecycle Costs ECO2.1 Efficient Use of Space SOCIOCULTURAL AND FUNCTIONAL QUALITY SOC1.2 Indoor Air Quality SOC1.3 Acoustic Comfort TECHNICAL QUALITY TEC1.5 Ease of Cleaning and Maintenance TEC1.6 Ease of Dismantling and Recycling					

THIS DATA CAN BE USED TO COMPARE CARPET PRODUCTS WITHIN THE INTERFACE PORTFOLIO. COMPARISON WITH OTHER PRODUCTS WOULD REQUIRE USE OF SAME METHODOLOGIES.
Interface reserves the right to change or modify any information included on the Environmental Data Sheet. Information updated 14th February 2013.



TacTiles™

- A smarter, more sustainable way to install carpet tiles
- No need for liquid adhesives
- Fitting tiles is quick, clean and easy and the process virtually eliminates emissions
- No damage to sub floors, and nothing to stop you lifting or moving the carpet whenever you want



Entrance Matting

Incredibly tough, hard-wearing and practical; indoor entrance matting acts as the first line of defence to any interior by removing almost 100% of dirt, rain and mud before it's walked into your flooring.

Both of the products in our commercial entrance matting range – Barricade and Foyer – are resilient, functional, easy to maintain and stylish. And it's for these reasons that our barrier matting forms an essential part of any maintenance programme needed to keep your floorcovering looking its very best.